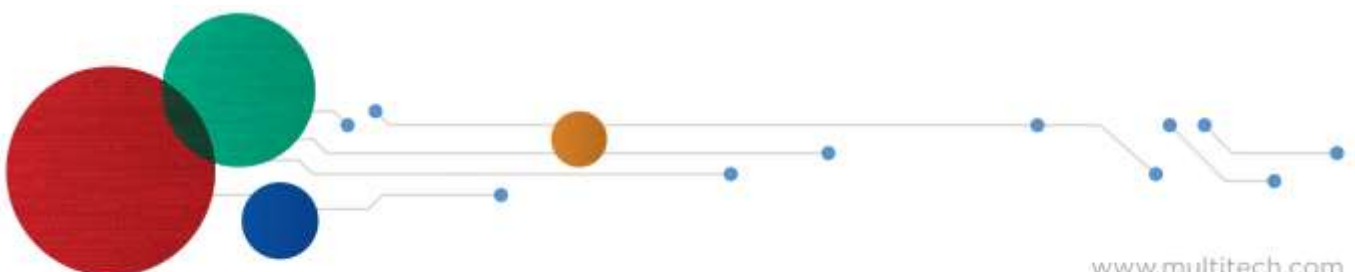




Universal Socket

MT-SMI-DK Developer Guide



Universal SocketModem® Developer Guide

S000342, Version W

Use Rev S for all builds of the following devices. Consult model specific Device Guides for build options. If you have an older SocketModem, contact Multi-Tech for documentation.

Cellular SocketModems

MTSMC-G2	MTSMC-G3	MTSMC-H5
MTSMC-C1	MTSMC-C2	MTSMC-LEU1
MTSMC-H3	MTSMC-EV3	MTSMC-LAT1
MTSMC-EV2	MTSMC-E1	MTSMC-LVW2

Analog SocketModems

MT9234SMI	MT5692SMI	MT2492SMI
-----------	-----------	-----------

Embedded Device Servers

MT100SEM-IP	MTS2BTSMI
-------------	-----------

Copyright

This publication may not be reproduced, in whole or in part, without the specific and express prior written permission signed by an executive officer of Multi-Tech Systems, Inc. All rights reserved. Copyright © 2017 by Multi-Tech Systems, Inc.

Multi-Tech Systems, Inc. makes no representations or warranties, whether express, implied or by estoppels, with respect to the content, information, material and recommendations herein and specifically disclaims any implied warranties of merchantability, fitness for any particular purpose and non-infringement.

Multi-Tech Systems, Inc. reserves the right to revise this publication and to make changes from time to time in the content hereof without obligation of Multi-Tech Systems, Inc. to notify any person or organization of such revisions or changes.

Trademarks

Multi Tech, SocketModem, SocketWireless, Universal IP, SocketEthernet IP and the Multi-Tech logo are registered trademarks of Multi-Tech Systems, Inc. All other brand and product names are trademarks or registered trademarks of their respective companies.

Legal Notices

The Multi-Tech products are not designed, manufactured or intended for use, and should not be used, or sold or re-sold for use, in connection with applications requiring fail-safe performance or in applications where the failure of the products would reasonably be expected to result in personal injury or death, significant property damage, or serious physical or environmental damage. Examples of such use include life support machines or other life preserving medical devices or systems, air traffic control or aircraft navigation or communications systems, control equipment for nuclear facilities, or missile, nuclear, biological or chemical weapons or other military applications ("Restricted Applications"). Use of the products in such Restricted Applications is at the user's sole risk and liability.

MULTI-TECH DOES NOT WARRANT THAT THE TRANSMISSION OF DATA BY A PRODUCT OVER A CELLULAR COMMUNICATIONS NETWORK WILL BE UNINTERRUPTED, TIMELY, SECURE OR ERROR FREE, NOR DOES MULTI-TECH WARRANT ANY CONNECTION OR ACCESSIBILITY TO ANY CELLULAR COMMUNICATIONS NETWORK. MULTI-TECH WILL HAVE NO LIABILITY FOR ANY LOSSES, DAMAGES, OBLIGATIONS, PENALTIES, DEFICIENCIES, LIABILITIES, COSTS OR EXPENSES (INCLUDING WITHOUT LIMITATION REASONABLE ATTORNEYS FEES) RELATED TO TEMPORARY INABILITY TO ACCESS A CELLULAR COMMUNICATIONS NETWORK USING THE PRODUCTS.

The Multi-Tech products and the final application of the Multi-Tech products should be thoroughly tested to ensure the functionality of the Multi-Tech products as used in the final application. The designer, manufacturer and reseller has the sole responsibility of ensuring that any end user product into which the Multi-Tech product is integrated operates as intended and meets its requirements or the requirements of its direct or indirect customers. Multi-Tech has no responsibility whatsoever for the integration, configuration, testing, validation, verification, installation, upgrade, support or maintenance of such end user product, or for any liabilities, damages, costs or expenses associated therewith, except to the extent agreed upon in a signed written document. To the extent Multi-Tech provides any comments or suggested changes related to the application of its products, such comments or suggested changes is performed only as a courtesy and without any representation or warranty whatsoever.

Contacting Multi-Tech

Knowledge Base

The Knowledge Base provides immediate access to support information and resolutions for all Multi-Tech products. Visit <http://www.multitech.com/kb.go>.

Support Portal

To create an account and submit a support case directly to our technical support team, visit: <https://support.multitech.com>

Support

Business Hours: M-F, 9am to 5pm CT

Country	By Email	By Phone
Europe, Middle East, Africa:	support@multitech.co.uk	+(44) 118 959 7774
U.S., Canada, all others:	support@multitech.com	(800) 972-2439 or (763) 717-5863

World Headquarters

Multi-Tech Systems, Inc.
2205 Woodale Drive
Mounds View, Minnesota 55112
Phone: 763-785-3500 or 800-328-9717
Fax: 763-785-9874

Warranty

To read the warranty statement for your product, please visit: <http://www.multitech.com/warranty.go>.

Contents

Chapter 1 – Embedded Solutions	7
Universal Socket Connectivity Features.....	7
Universal IP	7
Developer Documentation.....	7
The Universal Socket Design	8
Embedded Modem and Device Servers.....	9
Embedded Cellular Modems.....	9
Embedded Analog Modems.....	9
Embedded Device Servers	9
Universal Developer Kit Contents	10
Attaching Power Supply Blades	10
Chapter 2 – Universal Socket Pinout	12
Pinout Diagrams.....	12
Universal SocketModem Pinout.....	12
Chapter 3 – Universal Design Considerations	16
Noise Suppression Design Considerations.....	16
PC Board Layout Guidelines	16
User accessible areas.....	16
Electromagnetic Interference (EMI) Considerations	17
Electrostatic Discharge Control.....	17
USB Design Considerations.....	18
Phone Line Warning Statement for the Developer Board.....	18
Mounting Hardware and Tooling Holes.....	18
Soldering	18
SIP Connector.....	19
Chapter 4 – Developer Board and Schematics	20
SocketModem Developer Board.....	20
SocketModem Developer Board Block Diagram.....	22
Developer Board Schematics	23
Board Components	30
Installing a Universal Socket Communications Device onto the Board.....	31
Installing a SIM Card in a Device	31
Chapter 5 – Safety Notices and Warnings	32
Cellular Safety	32
RF Safety	32
Interference with Pacemakers and Other Medical Devices	33
Vehicle Safety.....	33

Device Maintenance	34
User Responsibility.....	34
Analog Telecom Safety Warnings	34
Chapter 6 – Labeling Requirements	35
Cellular Approvals and Labeling Requirements	35
Approvals and Certification	35
Analog Labeling Requirements	37
United States Labeling Requirements (for Dial-Up Modems)	37
Canadian Labeling Requirements (for Dial-Up Modems)	38
Chinese Labeling Requirement	41
Chapter 7 – Regulatory Information.....	42
Telecom Approvals for Analog Modems.....	42
Country/Region-Specific Statements	42
EMC, Safety, and R&TTE Directive Compliance	42
International Modem Restrictions.....	43
47 CFR Part 15 Regulation Class B Devices	43
EMC Requirements for Industry Canada	43
47 CFR Part 68 Telecom	44
South African Statement.....	45
Thailand Approval for MT9234SMI and MT5692SMI	45
New Zealand Telecom Warning Notice	45
Brazil Approval for the MT9234SMI.....	46
Russian Statement	46
Korea Class B Statement.....	47
Japan Requirements	47
Other Countries	47
Waste Electrical and Electronic Equipment Statement	48
WEEE Directive.....	48
Instructions for Disposal of WEEE by Users in the European Union.....	48
REACH Statement.....	49
Registration of Substances.....	49
Substances of Very High Concern (SVHC)	49
Restriction of the Use of Hazardous Substances (RoHS)	50
Information on HS/TS Substances According to Chinese Standards	51
Information on HS/TS Substances According to Chinese Standards (in Chinese)	52
依照中国标准的有毒有害物质信息.....	52
Chapter 8 – Antennas, Cables, and GPS.....	53
Antenna System for Cellular Devices	53
PTCRB Antenna Requirements.....	53

Authorized Antennas	53
HSPA / UMTS Antenna Requirements/Specifications	53
EV-DO and CDMA Antenna Requirements/Specifications	54
GSM Antenna Requirements/Specifications	54
GPS Antenna Requirements/Specifications	54
Bluetooth Antenna Requirements/Specifications	54
Antennas Available from Multi-Tech	55
Additional Sources of Bluetooth Antennas	56
Coaxial Cable Specifications	56
SMA-to-UFL and RSMA-to-UFL Coax Cables	56
SMA-to-MMCX and RSMA-to-MMCX Coax Cable	56
SMA-to-MMCX Connector	57
OEM Integration	58
FCC Notes	58
Host Labeling	59
Antenna Diversity	59
Using Antenna Diversity	60
Placing External Antennas	60
Placing GPS Antennas	60
Selecting Antennas	60
Antenna Approvals and Safety Considerations	60
Diversity and Power Draw	60
Global Positioning System (GPS)	61
Technical Specifications	61
Features	61
Underwriters Laboratories Required Global Positioning System (GPS) Statement	61
Chapter 9 – Upgrading Modem Firmware	63
Upgrading with the Flash Wizard	63
Chapter 10 – Cellular Socket Modems	64
Models and Documentation	64
Account Activation for Cellular Devices	64
Chapter 11 – Analog Socket Modems	65
Models and Documentation	65
Chapter 12 – Embedded Device Servers	66
Models and Documentation	66
Telecom	68
Index	69

Chapter 1 – Embedded Solutions

Universal Socket Connectivity Features

Get to market quickly with Multi-Tech's pre-approved and ready-to-integrate embedded device networking solutions with Universal Socket connectivity and Universal IP. Once deployed, your initial design and host application can quickly adjust to new technologies, essentially future-proofing your solution.

Multi-Tech's Universal Socket offers a flexible architecture that allows you to use one system design and populate it with your connectivity module of choice.

- Interchangeable socket device
- Provides cellular, Ethernet, PSTN or Bluetooth network access
- Global approvals
- Quick-to-market
- Easy migration to future technologies, simply upgrade your connectivity module and keep your product current and design intact

Universal IP

Multi-Tech's Universal IP stack consists of a common set of TCP/IP networking protocols and M2M applications implemented using a standard AT command interface. Universal IP provides developers a common programming interface effectively future proofing their application as new cellular technologies are introduced.

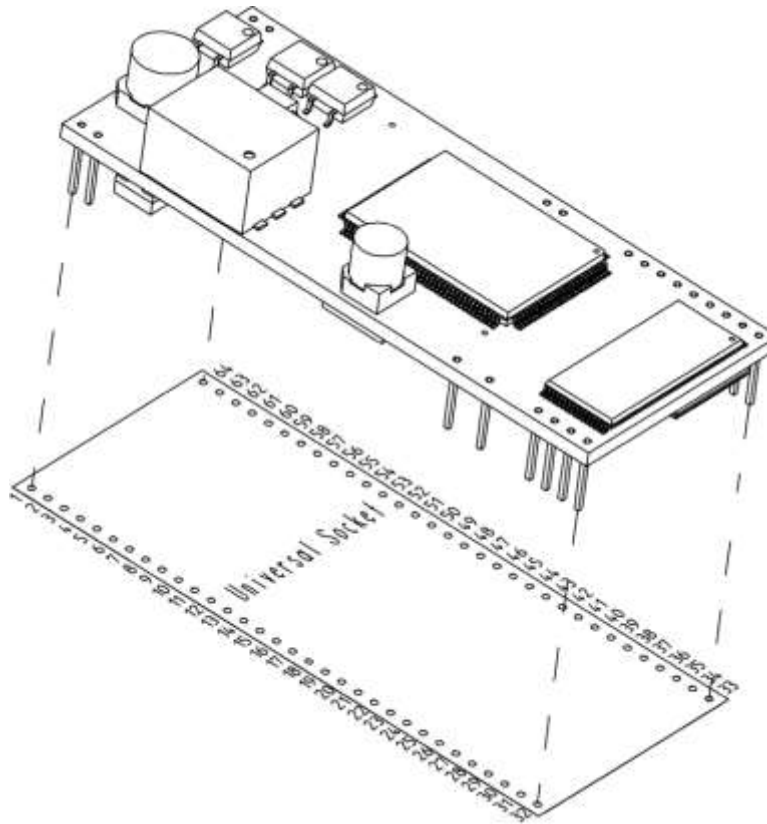
Developer Documentation

Download the documentation from www.multitech.com/support.go. Search on your model to access documentation for that device.

- **Universal Socket Developer Guide** – This document. Provides an overview, safety and regulatory information, design considerations, schematics, and general device information.
- **Device Guides** – Provides model-specific specifications and developer information.
- **AT Command Guides** – Device specific AT command reference guides.
- **USB Driver Installation Guide** – Provides steps for installing USB drivers.
- **Fax Commands** – Class 1 and Class 2 commands are supported by some analog modems. Consult the Device Guide to determine which command set is supported by your device.

The Universal Socket Design




Each pin on a SocketModem corresponds to a particular function. The universal socket design provides a universal location for each pin. This allows each SocketModem to be used in a common board. Refer to [Universal Socket Pinout](#) for pinout details.



Embedded Modem and Device Servers



Embedded Cellular Modems

Refer to [Cellular SocketModems](#) for details about specific models and related documentation.

 <p>SocketModem iCell</p>	<p>Complete, ready-to-integrate 2G and 3G, GSM and CDMA intelligent cellular modems using Multi-Tech's Universal Socket design and Universal IP stack for automatic/persistent connectivity and enhanced M2M (machine-to-machine) functionality. Models available with GPS tracking capability.</p>
 <p>SocketModem Cell</p>	<p>Complete, ready-to-integrate 2G and 3G, GSM, CDMA, and LTE embedded cellular modem's using Multi-Tech's Universal Socket design.</p>
 <p>SocketModem EDGE</p>	<p>A complete, ready-to-integrate EDGE Class 12 embedded cellular modem using Multi-Tech's Universal Socket design.</p>



Embedded Analog Modems

Refer to [Analog SocketModems](#) for details about specific models and related documentation.

 <p>SocketModem</p>	<p>Complete, ready-to-integrate data/fax analog embedded modems using Multi-Tech's Universal Socket design and telecom approved in more than 50 countries.</p>
 <p>SocketModem IP</p>	<p>A complete, V.92 intelligent modem that creates Internet-ready devices by integrating modem functionality and a complete TCP/IP protocol stack into a single Universal Socket design.</p>

Embedded Device Servers

Refer to [Embedded Device Servers](#) for details about specific models and related documentation.

 <p>SocketEthernet IP</p>	<p>Intelligent serial-to-Ethernet device server connects serial devices to an IP network via a 10/100BaseT Ethernet interface to enable IP networking into virtually any device allowing remote monitoring, control and configuration. Models available with medical and high voltage isolation.</p>
 <p>SocketWireless Bluetooth</p>	<p>Complete, ready-to-integrate embedded serial-to-Bluetooth® device server provides secure wireless connections between a host and peripheral device. Supports point-to-point and multi-point communications allowing wireless data transfers up to 100 meters.</p>

Universal Developer Kit Contents

Your Universal Developer Kit (MTSMI-UDK) includes the following:

Developer Board	One MTSMI-UDK Developer Board
Power Supply	One 100-240V 9V-1.7A power supply with removable blades One US blade/plug One EURO blade/plug One UK blade/plug
Cables	One RS-232 DB9F-DB25M serial cable One RJ-11 phone cable One RJ-45 Ethernet cable One USB cable
Antennas	Two hepta band antenna for cellular modems One 2.4GHz, ½ WAVE antenna with reverse polarity for Bluetooth devices One GPS antenna
Antenna Cables	One SMA-to-MMCX antenna cable for cellular antennas Three SMA-to-UFL antenna cables one for select cellular antennas One for GPS antennas One RSMA-to-MMCX antenna cable for Bluetooth antennas
Customer Notices	Modem activation notice
Additional	One promotional screwdriver

Attaching Power Supply Blades

Power Supply and Blades



Power Supply No Blades



Power Supply with EU blade



Power Supply with NAM blade



Power Supply with UK blade

To attach a power supply blade:

1. Remove the power supply cover (not shown). To do this, slide the lock down and hold it while you lift off the cover.
2. Insert the latch on the blade into the notch on the power supply.
3. Slide the lock down and hold it while you press the blade in place.



Chapter 2 – Universal Socket Pinout

Pinout Diagrams



Universal SocketModem Pinout

Note:

Some modems do not include all the pins shown above. Refer to your model's Device Guide for model specific pinout information.

Pin	Signal Name	In/Out	Description
1	Tip	I/O	Tip Signal from Telco. Tip connection to the phone line (RJ-11 Pin 4). The SocketModem is Tip/Ring polarity insensitive.
2	Ring	I/O	Ring Signal from Telco. Ring connection to the phone line (RJ-11 Pin 3). The SocketModem is Tip/Ring polarity insensitive.
3	Safety Void	N/A	Safety Clearance. 2.5 mm is required between TNV circuits and SELV circuits.
4	TX+	O	Transmit Outputs (TX+ and TX-). Differential transmit outputs for Ethernet.
5	TX-	O	Transmit Outputs (TX+ and TX-). Differential transmit outputs for Ethernet.
6	RX-	I	Receive Inputs. Differential receive input pins for Ethernet. Dummy pin for MT810SWM-IP.
7	RX+	I	Receive Inputs. Differential receive input pins for Ethernet.
8	Safety Void	N/A	Safety Clearance. 2.5 31mm is required between TNV circuits and SELV circuits.
9	Dummy		Dummy pin for EDGE.

Pin	Signal Name	In/Out	Description
10	Unused	N/A	Reserved for future use.
11	Unused	N/A	Reserved for future use.
12	Unused	N/A	Reserved for future use.
13	Unused	N/A	Reserved for future use.
14	Unused	N/A	Reserved for future use.
15	GPS-SDI	I	GPS Data In.
16	GPS-SDO	O	GPS Data Out.
17	GPS-PPS		GPS Pulse per Second.
18	SPI_CLK		Serial Peripheral Interface custom factory option.
19	SPI_MISO	O	Serial Peripheral Interface custom factory option.
20	SPI_MOSI	I	Serial Peripheral Interface custom factory option.
21	SPI_CS0		Serial Peripheral Interface custom factory option.
22	MIC+	I	Microphone positive input. See individual Device Guides for microphone details.
23	MIC-	I	Microphone negative input. See individual Device Guides for microphone details.
24	-RESET*	I	<p>Device Reset (with pull-up). The active low –RESET input resets the device logic and returns the configuration of the device to the original factory default values or "stored values" in the NVRAM. –RESET is tied to VCC through a time-constant circuit for "Power-on-Reset" functionality. See individual Device Guides for timings.</p> <p>A Design Consideration Allowing the host processor to control the SocketModem's RESET line allows the host to reset the device if it fails to respond normally. Resetting the SocketModem returns it to a known functional state.</p>
25	USB_VBUS	I	USB Voltage Sense. Senses the voltage level of the USB to determine if the bus is available.
26	GND	GND	Logic Ground.
27	USB_DP	I/O	USB Data Positive. Positive pin of the USB data pair.
28	USB_DN	I/O	USB Data Negative. Negative pin of the USB data pair.
29	LED DCD	O	DCD (Active High). Output from 74LCX14 with a 1000 Ohms resistor in series. SocketWireless Bluetooth (MTS2BTSMI): When lit, indicates a connection. No series resistor.
30	LED RX	O	RX (Active High). Output from 74LCX14 with a 1000 Ohms resistor in series. SocketWireless Bluetooth (MTS2BTSMI): No series resistor.
31	LED DTR	O	DTR (Active High). Output from 74LCX14 with a 1000 Ohms resistor in series. SocketWireless Bluetooth (MTS2BTSMI): No series resistor.
32	LED TX	O	TX (Active High). Output from 74LCX14 with a 1000 Ohms resistor in series. SocketWireless Bluetooth (MTS2BTSMI): No series resistor.
33	–RTS	I	<p>Request to Send (Active Low). –RTS is controlled by the DTE to indicate whether or not the DTE is ready to receive data. –RTS ON (low) indicates that the DTE is ready to receive data from the modem on RXD. –RTS OFF indicates to the SocketModem that it should not transfer data on the RXD.</p> <p>Note: When the –RTS pin is not in use, it should be tied low.</p>

Pin	Signal Name	In/Out	Description
34	–RXD	O	Received Data. The SocketModem uses the RXD line to send data to the DTE and to send SocketModem responses to the DTE. In command mode, –RXD data presents the SocketModem responses to the DTE. SocketModem responses take priority over incoming data when the two signals are in competition for –RXD. When no data is transmitted, the signal is held in mark condition.
35	–TXD	I	Transmitted Data. The DTE uses the –TXD line to send data to the SocketModem for transmission or to transmit commands to the SocketModem. The DTE holds this circuit in mark state when no data is being transmitted or during intervals between characters.
36	–RI	O	RING (Active Low). Incoming ring signal from phone. Ring Indicate. –RI output ON (low) indicates the presence of an ON segment of a ring signal on the telephone line. The modem will not go off-hook when –RI is active; the modem waits for –RI to go inactive before going off-hook. SocketWireless Bluetooth (MTS2BTSMI): Strobes 1/sec for slave indication.
37	–DSR	O	Data Set Ready (Active Low). –DSR indicates SocketModem status to the DTE. –DSR OFF (high) indicates that the DTE is to disregard all signals appearing on the interchange circuits except Ring Indicator (–RI). It reflects the status of the local data set and does not indicate an actual link with any remote data equipment.
38	–CTS	O	Clear to Send (Active Low). –CTS is controlled by the SocketModem to indicate whether or not the SocketModem is ready to transmit data. –CTS ON indicates to the DTE that signals on TXD will be transmitted. –CTS OFF indicates to the DTE that it should not transfer data on TXD.
39	–DCD	O	Data Carrier Detect (Active Low). –DCD output is ON (low) when a data connection is established and the SocketModem is ready to send/receive data.
40	–DTR	I	Data Terminal Ready (Active Low). The –DTR input is turned ON (low) when the DTE is ready to communicate. –DTR ON prepares the modem to be connected, and, once connected, maintains the connection. –DTR OFF places the modem in the disconnect state under control of the &Dn and &Qn commands. Note: When the –DTR pin is not in use, it should be tied low.
41	GND	GND	Logic Ground.
42	SPK-	O	Cellular GPRS, CDMA, and EDGE. Negative analog speaker output.
43	SPK+	O	Cellular GPRS, CDMA, and EDGE. Positive analog speaker output.
44	PCM_DO	O	Digital voice custom factory option.
45	PCM_DI	I	Digital voice custom factory option.
46	PCM_FS	O	Digital voice custom factory option.
47	PCM_CLK	O	Digital voice custom factory option.
48	GPIO ¹	I/O	General Purpose Input/Output. User-configurable input or output pin. ²
49	GPIO ¹	I/O	General Purpose Input/Output. User-configurable input or output pin. ²
50	GPIO ¹	I/O	General Purpose Input/Output. User-configurable input or output pin. ²
51	GPIO ¹	I/O	General Purpose Input/Output. User-configurable input or output pin. ²
52	DBTX/GPIO	O	Not currently used.
53	DBRX/GPIO	I	Not currently used.
54	GPIO	N/A	Reserved for future use.
55	Heartbeat	N/A	Reserved for future use.

Pin	Signal Name	In/Out	Description
56	–LED FDX	O	LED Full Duplex (Active Low). LED Output. During normal operation, this pin lights the FDX LED to indicate a full duplex mode.
57	–LED ACT	O	LED Active (Active Low). LED Output. During normal operation, this pin lights the Activity LED when transmitting or receiving. It flashes at a rate of 50ms high and 50ms low when active.
58	–LEDLINK	O	LED LINK (Active Low). LED Output. During normal operation, this pin lights the LINK LED to indicate a good link is detected. Refer the individual Device Guide for PIN 58 LED Mode details.
59	–LEDCOL	O	LED Collision (Active Low). LED Output. During normal operation, this pin lights the COL LED to indicate a collision. It flashes at 50ms high and 50ms low when active.
60	–LEDSPD	O	LED Speed (Active Low). LED Output. During normal operation, this pin lights the SPEED LED to indicate 100Mbps is selected.
61	VCC	PWR	DC Input Power. 3.3V or 5VDC power, depending upon the build.
62	MICV	I	Single-Ended Microphone. Single-ended microphone input for dial-up SocketModem speakerphone and TAM functions.
63	AGND	GND	Analog Ground. Analog ground is tied common with DGND on the SocketModem. To minimize potential ground noise issues, connect audio circuit return to AGND.
64	SPKR	O	Speaker. Dual purpose output for call progress signals or speakerphone functions. Call Progress signaling on MT5692SMI and MT2492SMI is a square wave output that can be optionally connected to a low-cost single-ended speaker; e.g., a sounducer or an analog speaker circuit. Call progress on the MT9234SMI is an analog output. Speakerphone Output on the MT5692SMI is under the control of +FCLASS. This is a single-ended analog output. SPKR is tied directly to the CODEC. One side of a differential AC output coupled through a 6.8K ohm resistor and capacitor.
65	Unused	N/A	Reserved for future use.
66	Unused	N/A	Reserved for future use.
67	Unused	N/A	Reserved for future use.
68	Unused	N/A	Reserved for future use.
69	Unused	N/A	Reserved for future use.
70	Unused	N/A	Reserved for future use.
71	Unused	N/A	Reserved for future use.
72	Unused	N/A	Reserved for future use.
73	Unused	N/A	Reserved for future use.
74	Unused	N/A	Reserved for future use.

¹GPIO pins can be configured using the Universal IP AT Commands. Refer to the Universal IP AT Commands Reference Guide.

²For MTSMC-H3-MI-IP, MTSMC-EV2-MI-IP, MTSMC-EV2-MI-GP, MTSMC-H5-MI, MTSMC-H5-MI-GP, MTSMC-EV3-MI and MTSMC-EV-MI-GP only.

Chapter 3 – Universal Design Considerations

Noise Suppression Design Considerations

Adhere to engineering noise-suppression practices when designing a printed circuit board (PCB) containing the SocketModem. Noise suppression is essential to the proper operation and performance of the modem and surrounding equipment.

Any OEM board design that contains the SocketModem should consider both on-board and off-board generated noise that can affect digital signal processing. Both on-board and off-board generated noise that is coupled on-board can affect interface signal levels and quality. Noise in frequency ranges that affect modem performance is of particular concern.

On-board generated electromagnetic interference (EMI) noise that can be radiated or conducted off-board is equally important. This type of noise can affect the operation of surrounding equipment. Most local government agencies have stringent certification requirements that must be met for use in specific environments.

Proper PC board layout (component placement, signal routing, trace thickness and geometry, etc.) component selection (composition, value, and tolerance), interface connections, and shielding are required for the board design to achieve desired modem performance and to attain EMI certification.

Other aspects of proper noise-suppression engineering practices are beyond the scope of this guide. Consult noise suppression techniques described in technical publications and journals, electronics and electrical engineering text books, and component supplier application notes.

PC Board Layout Guidelines

In a 4-layer design, provide adequate ground plane covering the entire board. In 4-layer designs, power and ground are typically on the inner layers. All power and ground traces should be 0.05 inches wide.

The recommended hole size for the SocketModem pins is 0.036 in. +/-0.003 in. in diameter. Use spacers to hold the SocketModem vertically in place during the wave solder process.

All creepages and clearances for the SocketModem have been designed to meet requirements of safety standards EN60950 or EN60601. The requirements are based on a working voltage of 125V or 250V. When implementing the recommended DAA* circuit interface in a third party design, strictly follow all creepage and clearance requirements in order to meet safety standards. The third party safety design must be evaluated by the appropriate national agency per the required specification.

User accessible areas

Based on where the third party design is to be marketed, sold, or used, it may be necessary to provide an insulating cover over all TNV exposed areas. Consult with the recognized safety agency to determine the requirements.

Note:

Even if the recommended design considerations are followed, there are no guarantees that a particular system will comply with all the necessary regulatory requirements. It is imperative that specific designs be completely evaluated by a qualified/recognized agency.

*DAA stands for Data Access Arrangement. DAA is the telephone line interface of the SocketModem.

Electromagnetic Interference (EMI) Considerations

The following guidelines are offered specifically to help minimize EMI generation. Some of these guidelines are the same as, or similar to, the general guidelines. To minimize the contribution of the SocketModem-based design to EMI, you must understand the major sources of EMI and how to reduce them to acceptable levels.

- Keep traces carrying high frequency signals as short as possible.
- Provide a good ground plane or grid. In some cases, a multilayer board may be required with full layers for ground and power distribution.
- Decouple power from ground with decoupling capacitors as close to the SocketModem power pins as possible.
- Eliminate ground loops, which are unexpected current return paths to the power source and ground.
- Decouple the telephone line cables at the telephone line jacks. Typically, use a combination of series inductors, common mode chokes, and shunt capacitors. Methods to decouple telephone lines are similar to decoupling power lines; however, telephone line decoupling may be more difficult and deserves additional attention. A commonly used design aid is to place footprints for these components and populate as necessary during performance/EMI testing and certification.
- Decouple the power cord at the power cord interface with decoupling capacitors. Methods to decouple power lines are similar to decoupling telephone lines.
- Locate high frequency circuits in a separate area to minimize capacitive coupling to other circuits.
- Locate cables and connectors to avoid coupling from high frequency circuits.
- Lay out the highest frequency signal traces next to the ground grid.
- If using a multilayer board design, make no cuts in the ground or power planes and be sure the ground plane covers all traces.
- Minimize the number of through-hole connections on traces carrying high frequency signals.
- Avoid right angle turns on high frequency traces. Forty-five degree corners are good; however, radius turns are better.
- On 2-layer boards with no ground grid, provide a shadow ground trace on the opposite side of the board to traces carrying high frequency signals. This will be effective as a high frequency ground return if it is three times the width of the signal traces.
- Distribute high frequency signals continuously on a single trace rather than several traces radiating from one point.

Electrostatic Discharge Control

Handle all electronic devices with certain precautions to avoid damage due to the static charge accumulation.

See the ANSI/ESD Association Standard (ANSI/ESD S20.20-1999) – a document “for the Development of an Electrostatic Discharge Control for Protection of Electrical and Electronic Parts, Assemblies and Equipment.” This document covers ESD Control Program Administrative Requirements, ESD Training, ESD Control Program Plan Technical Requirements (grounding/bonding systems, personnel grooming, protected areas, packaging, marking, equipment, and handling), and Sensitivity Testing.

Multi-Tech Systems, Inc. strives to follow all of these recommendations. Input protection circuitry has been incorporated into the Multi-Tech devices to minimize the effect of static buildup, take proper precautions to avoid exposure to electrostatic discharge during handling.

Multi-Tech uses and recommends that others use anti-static boxes that create a faraday cage (packaging designed to exclude electromagnetic fields). Multi-Tech recommends that you use our packaging when returning a product and when you ship your products to your customers.

USB Design Considerations

Multi-Tech recommends consulting Intel's High Speed USB Platform Design Guidelines, Rev. 1.0 for information about USB signal routing, impedance, and layer stacking. Also:

- Shield USB cables with twisted pairs (especially those containing D+/D-).
- Use a single 5V power supply for USB devices. Consult your model's Device Guide for Power Draw section for current (ampere) requirements.
- Route D+/D- together in parallel with the trace spacing needed to achieve 90 ohms differential impedance for the USB pair and to maintain a 20 mil space from the USB pair and all other signals.
- If power is provided externally, use a common ground between the carrier board and SocketModem.

Phone Line Warning Statement for the Developer Board

(Analog only) Use extreme caution when the phone line is installed due to live energized components. Do not touch any components on the board while the phone line is installed.

Detach the phone line when making modifications to or servicing the developer board.

For other telephone warnings, refer to the Telecom Warnings

Mounting Hardware and Tooling Holes

Refer to individual Device Guide for specific hardware requirements.

Soldering

Multi-Tech uses a wave soldering process:

Solder pot temperature:	275C
Preheat zone 1:	135C
Preheat zone 2:	160C
Preheat zone 3:	175C
Belt speed:	35.4 inches per minute

Preheat zones have top and bottom heaters.

WARNING: Do not wash. Washing may damage the device.

NOTE: Conditions of Acceptability for UL are available upon request at <https://support.multitech.com>.

SIP Connector

For more information about the SIP connector, see the following.

Neltron Industrial Co.

<http://www.neltron.com.tw/>

Part Number 2209S-XXG

Note:

4-Pin 2.0mm SIP Socket (2 each)

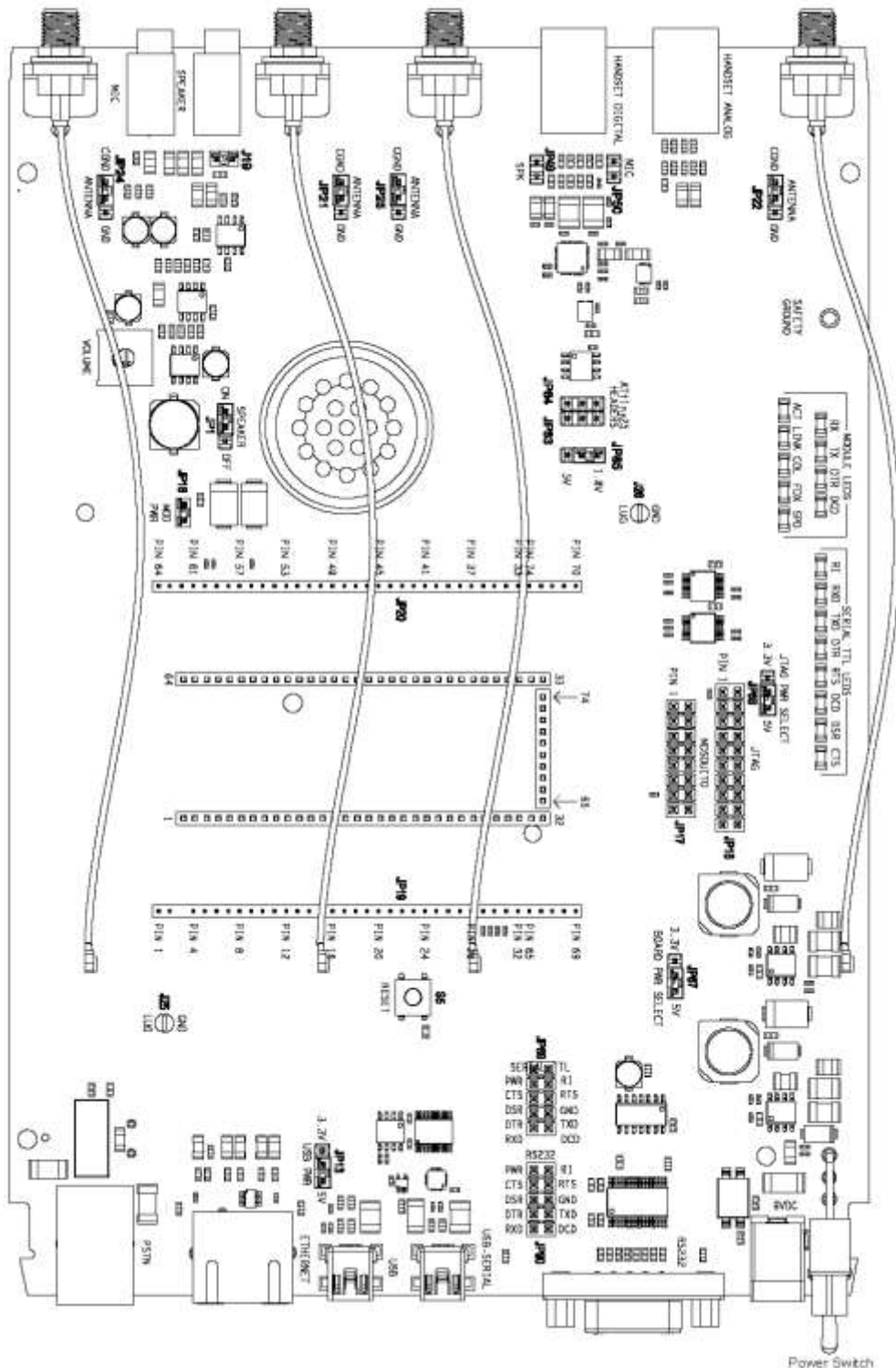
10-Pin 2.0mm SIP Socket (2 each)

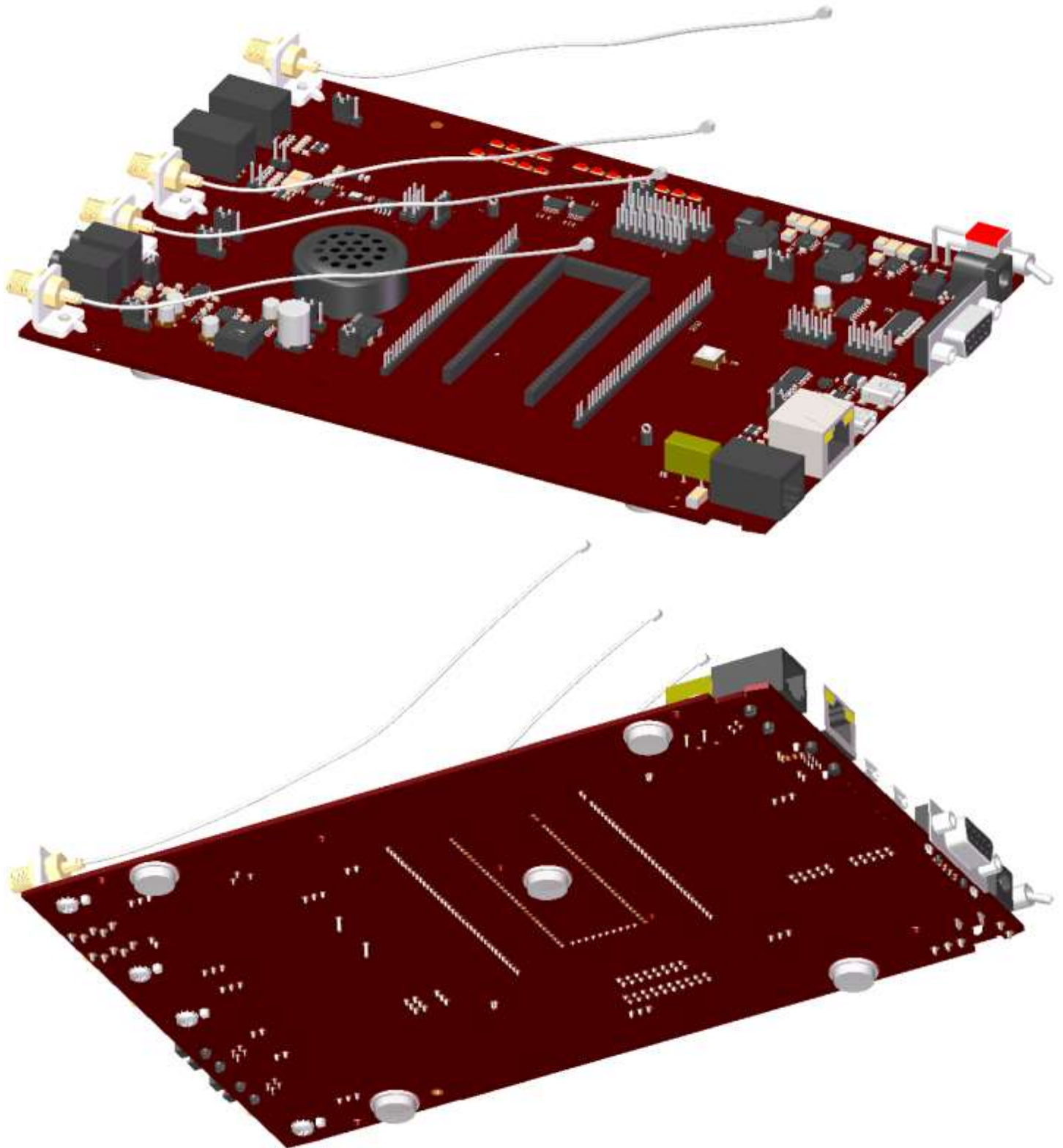
Chapter 4 – Developer Board and Schematics

Note: Third-party components shown in the following drawings are included as examples only.

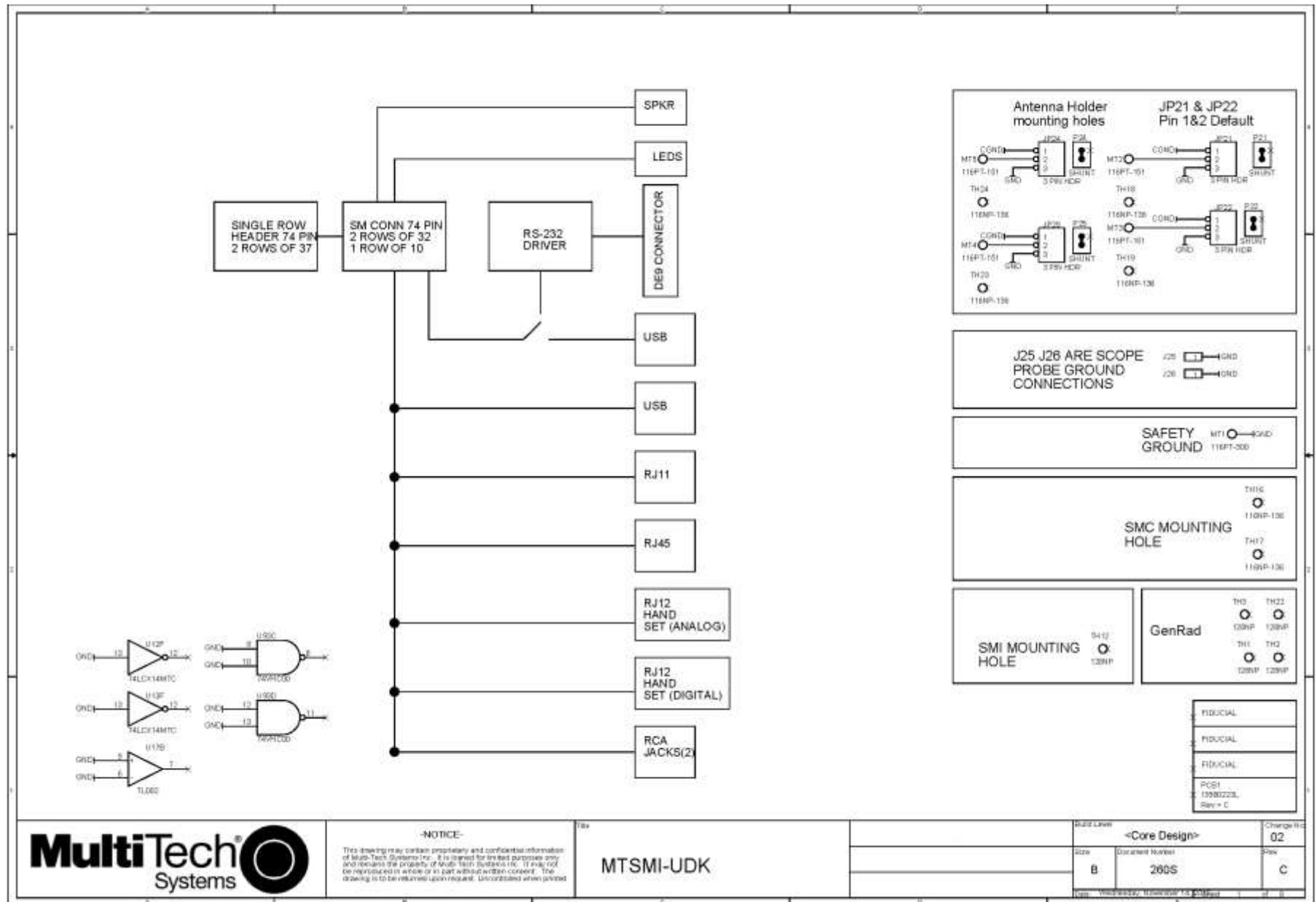
SocketModem Developer Board

This developer board drawing shows the major board components for all SocketModems.





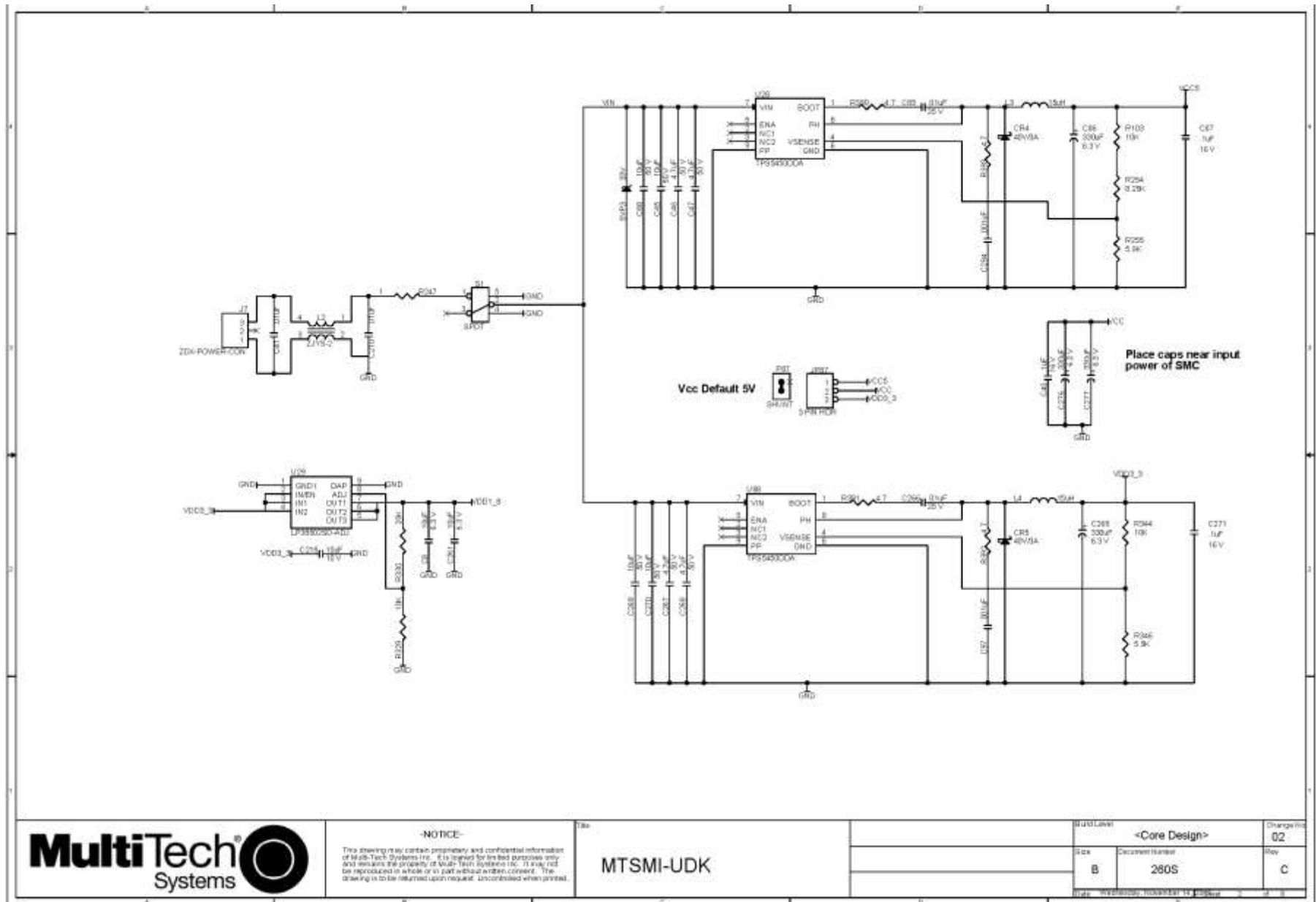
SocketModem Developer Board Block Diagram

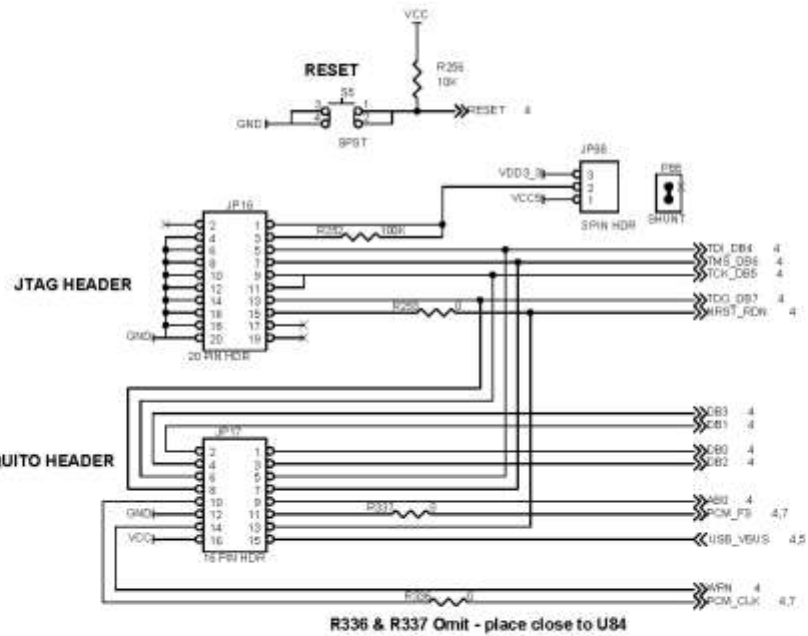
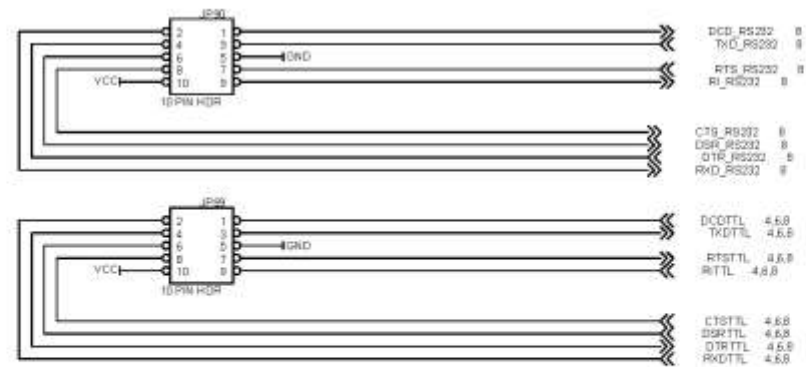


-NOTICE-
 This drawing may contain proprietary and confidential information of Multi-Tech Systems Inc. It is issued for limited purposes only and reveals the priority of Multi-Tech Systems Inc. It may not be reproduced in whole or in part without written consent. The drawing is to be returned upon request. Unclassified when printed.

MTSMI-UDK

Developer Board Schematics

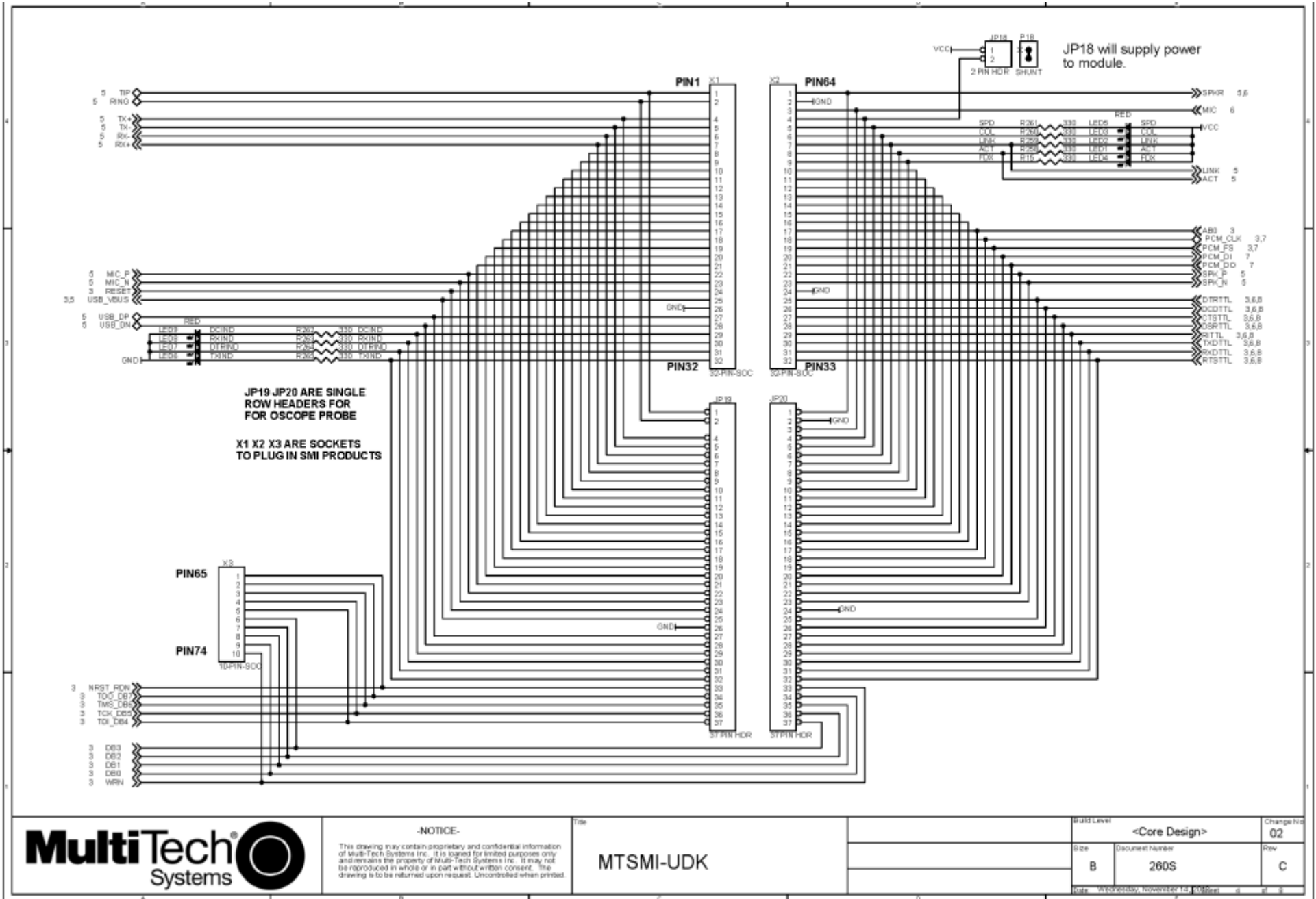




NOTICE:
This drawing may contain proprietary and confidential information of Multi-Tech Systems Inc. It is loaned for limited purposes only and remains the property of Multi-Tech Systems Inc. It may not be reproduced in whole or in part without written consent. The drawing is to be returned upon request. UNCONTROLLED WHEN PRINTED.

MTSMI-UDK

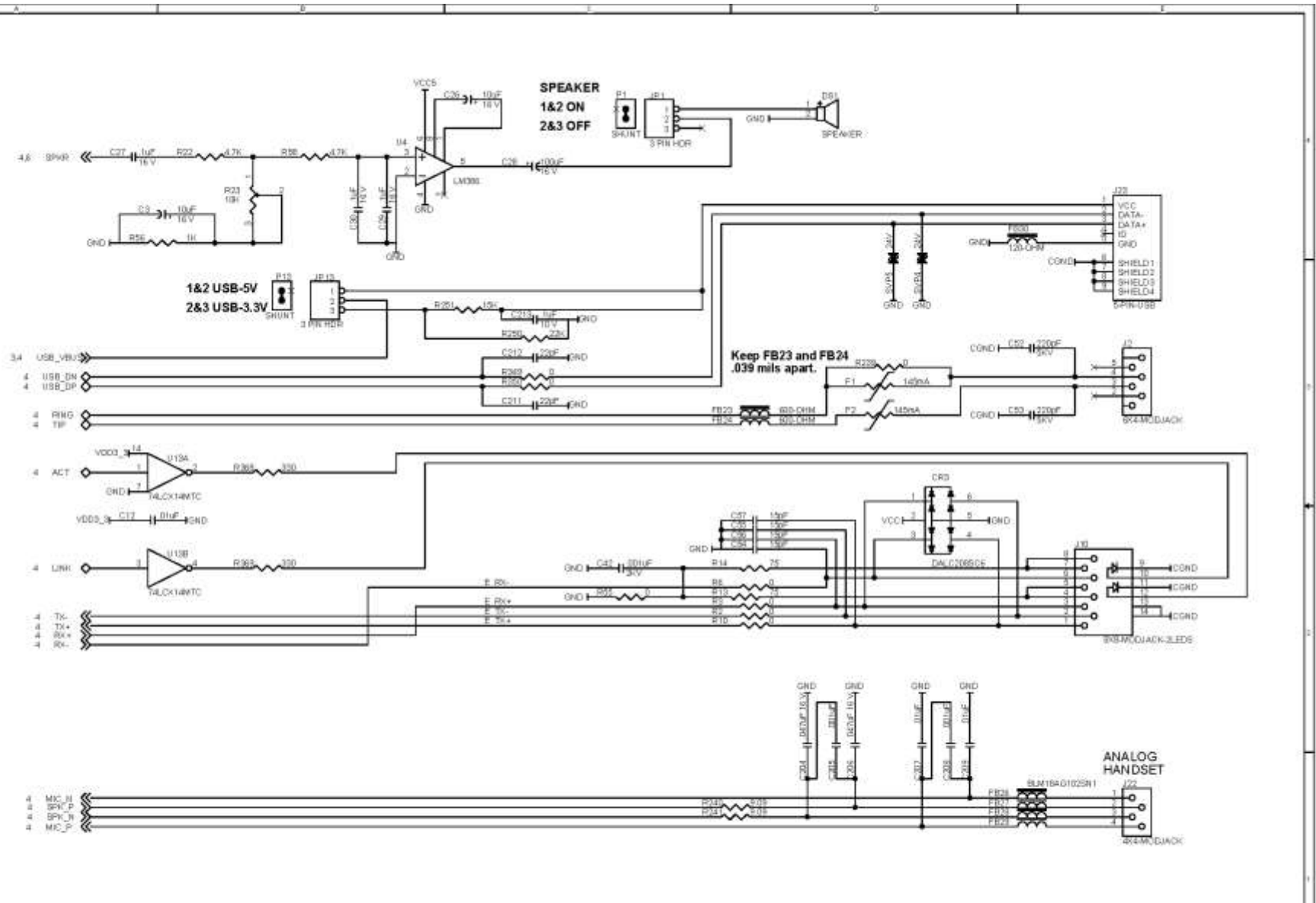
Build Level	<Core Design>		Change No.
Doc	Docuement Number		Rev
B	260S		C
Date:	Wednesday, November 14, 2012	3	of 3



-NOTICE-
 This drawing may contain proprietary and confidential information of Multi-Tech Systems Inc. It is issued for limited purposes only and remains the property of Multi-Tech Systems Inc. It may not be reproduced in whole or in part without written consent. The drawing is to be returned upon request. Uncontrolled when printed.

MTSMI-UDK

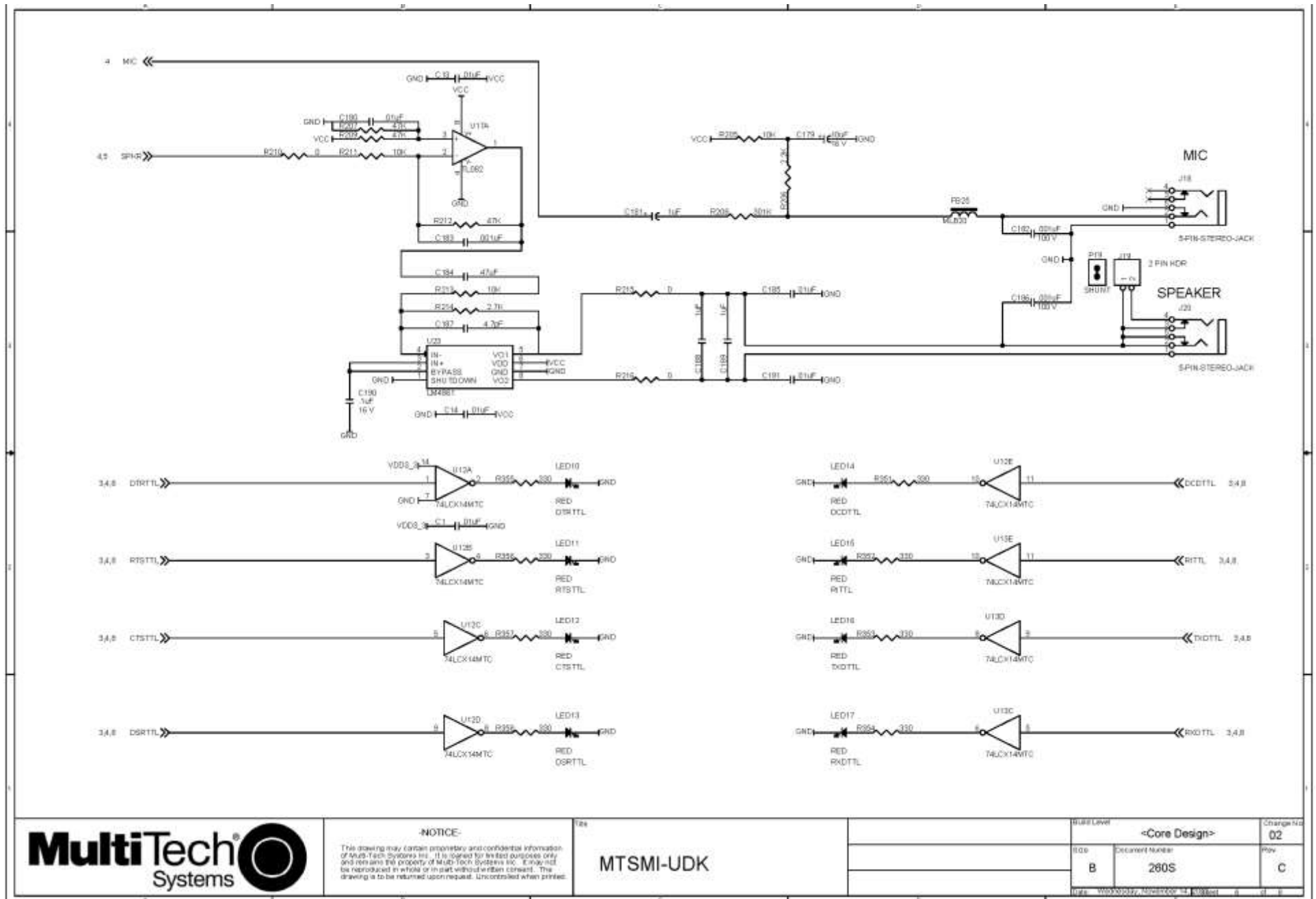
Build Level	<Core Design>		Change No
Size	Document Number	Rev	
B	260S	C	
Date	Wednesday, November 14, 2012	Time	11:58

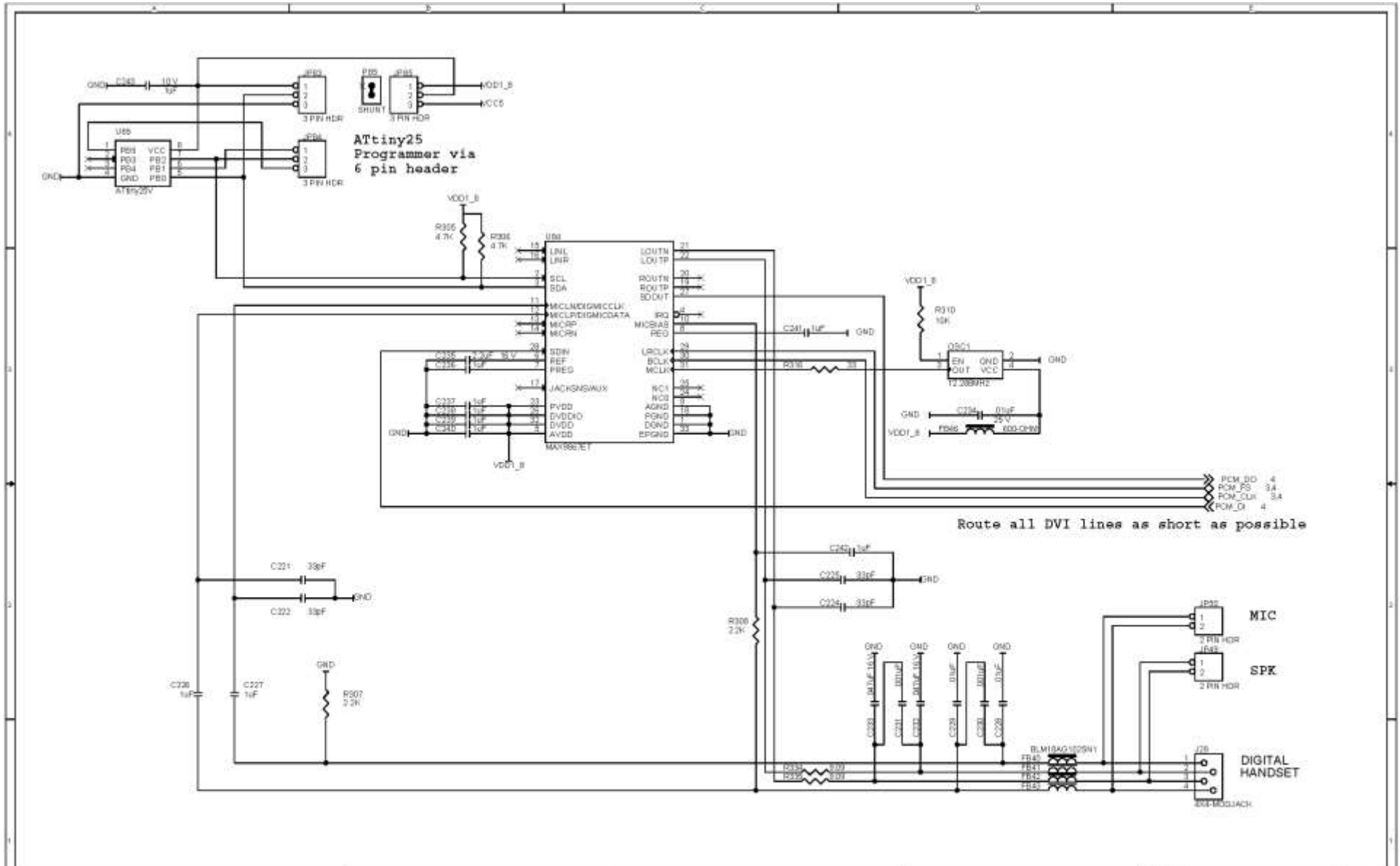


NOTICE:
 This drawing may contain proprietary and confidential information of Multi-Tech Systems Inc. It is loaned for limited purposes only and remains the property of Multi-Tech Systems Inc. It may not be reproduced in whole or in part without written consent. The drawing is to be returned upon request. Uncollected when printed.

File: **MTSMI-UDK**

Sheet Level	<Core Design>		Change No
Rev	Document Number		Rev
B	260S		C
Date	Wednesday, February 14, 2007		



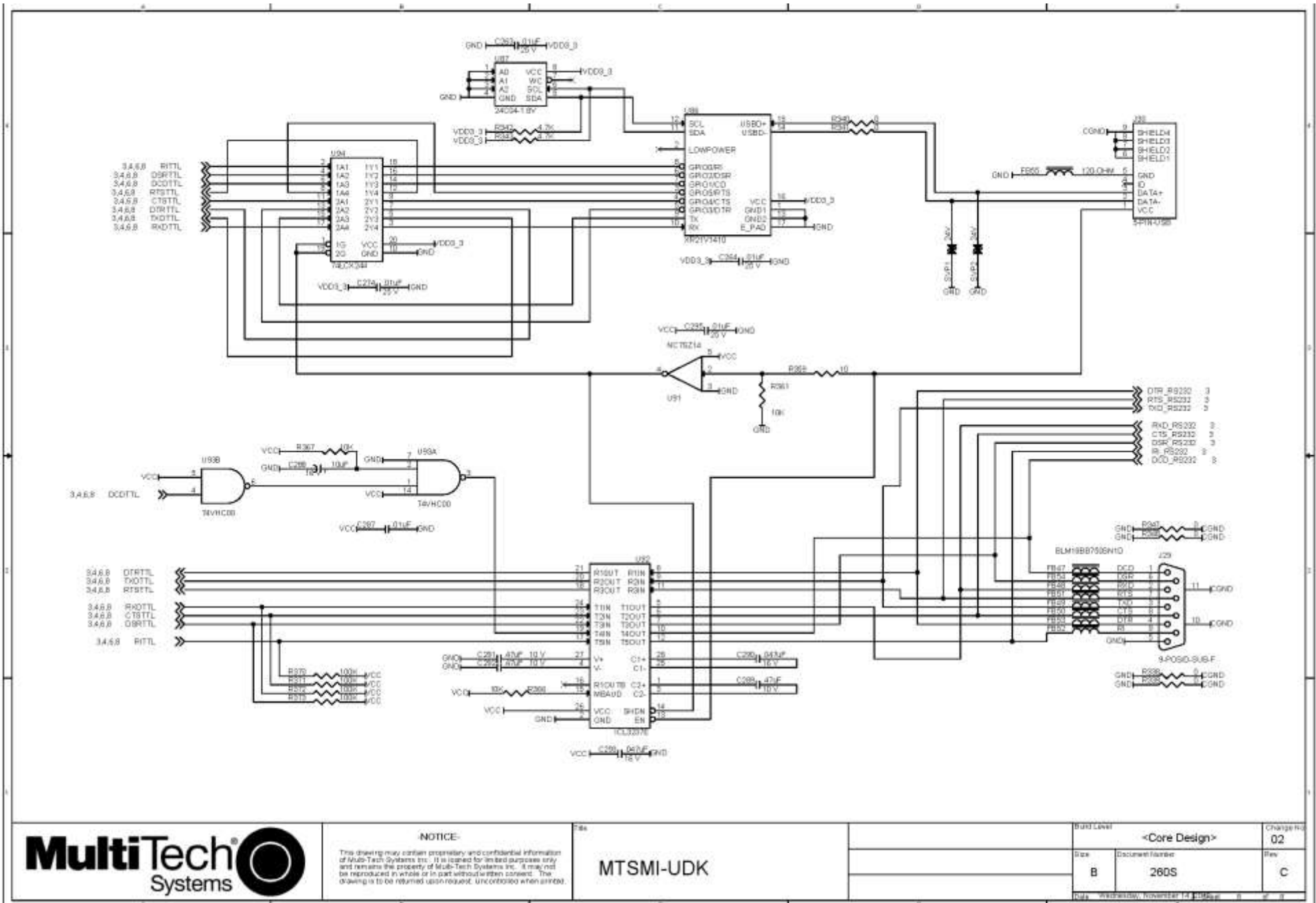


NOTICE:
 This drawing may contain proprietary and confidential information of Multi-Tech Systems Inc. It is loaned for limited purposes only and remains the property of Multi-Tech Systems Inc. It may not be reproduced in whole or in part without written consent. This drawing is to be returned upon request. Uncolored when printed.

File: **MTSMI-UDK**

Build Level	<Core Design>	Change No	02
Size	Doc#	Number	Rev
B	260S		C

Page: Wednesday, November 14, 2007 11:48 AM



NOTICE
 This drawing may contain proprietary and confidential information of Multi-Tech Systems, Inc. It is issued for limited purpose only and remains the property of Multi-Tech Systems, Inc. It may not be reproduced in whole or in part without written consent. The drawing is to be returned upon request. Uncolored when printed.

File: **MTSMI-UDK**

Board Level	<Core Design>	Change No	02
Rev	Document Number	Rev	C
B	260S		
Date	Wednesday, November 14, 2007		

Board Components

Schematic Jumper Label	PCB Label or Location	Description
J19	Next to stereo jack.	Allows a stereo jack feed. Default is ON. If ON, then left and right stereo channels are combined and form a mono channel.
J25& J26	GND LUG	Ground lug.
JP1	Speaker	Mutes the speaker. Default positions are 1 and 2 (speaker is not muted).
JP13	USB PWR	Set either 5V or 3.3V for USB_VBUS line (supplied by the VCC of the USB jack).
JP16	JTAG	JTAG header.
JP17	Mosquito	Mosquito header. If used to debug the SocketModem while using the USB port, remove the JP13 to disconnect USB_VBUS.
JP18	MOD PWR	Power feed (Vcc) SocketModem module. (X3).
JP19& JP20		Debugging probes pins for SocketModem.
JP21 & JP22	Antenna	Antenna ground select.
JP24 & JP25	Antenna	Antenna ground select.
JP28	Handset Digital	Digital handset jack, 4 pin connector (not labeled on schematic).
JP49	SPK	Speaker jack header.
JP50	MIC	Microphone jack header.
JP83 & JP84	ATtiny25	ATtiny25 6-pin programmer headers.
JP85	1.8V 5V	Selects operating voltage (1.8v or 5v) for the ATtiny25v micro-controller.
JP87	Board PWR Select	The 5V/3.3V regulator. Factory default operating voltage is 5V. Warning: <ul style="list-style-type: none"> ■ Verify that the 5V/3.3V jumper matches your SocketModem's requirements. If this jumper is set incorrectly, you could damage the SocketModem and/or Test/Demo board. ■ Use only the Multi-Tech Systems supplied transformer with the Test/Demo board. Using any other power source voids the warranty and will likely damage the Test/Demo board and SocketModem.
JP88	JTAG PWR Select	Selects operating voltage (5v or 3.3v) for the JTAG.
JP89	SER TL	Testing interface (debugging) for the serial TTL signals.
JP90	RS232	Testing interface (debugging) for the RS-232 signals.
S1	Next to 9VDC Power Jack	Board input power switch (not labeled on schematic).
S5	RESET	Reset push switch.

Jxx indicates jacks.

Installing a Universal Socket Communications Device onto the Board

To install a SMI/SMC modem:

1. Align the pin of the universal socket communications device with pin 1 of the universal socket connector on the board and press firmly.
2. Use the optional antenna lead to connect to the antenna connector on the modem.

Installing a SIM Card in a Device

To install a SIM card:

- Install the SIM card into the device's SIM card holder.

Chapter 5 – Safety Notices and Warnings

The following safety statements may be used in your product documentation.

Cellular Safety

RF Safety

Due to the possibility of radio frequency (RF) interference, it is important that you follow any special regulations regarding the use of radio equipment. Follow the safety advice given below.

CAUTION: Maintain a separation distance of at least 20 cm (8 inches) between the transmitter’s antenna and the body of the user or nearby persons. The modem is not designed for or intended to be used in portable applications within 20 cm of the user’s body.

Check your local standards regarding safe distances, etc.

- Operating your device close to other electronic equipment may cause interference if the equipment is inadequately protected. Observe any warning signs and manufacturers’ recommendations.
- Different industries and businesses restrict the use of cellular devices. Respect restrictions on the use of radio equipment in fuel depots, chemical plants, or where blasting operations are in process. Follow restrictions for any environment where you operate the device.
- Do not place the antenna outdoors.
- Switch OFF your wireless device when in an aircraft. Using portable electronic devices in an aircraft may endanger aircraft operation, disrupt the cellular network, and is illegal. Failing to observe this restriction may lead to suspension or denial of cellular services to the offender, legal action, or both.
- Switch OFF your wireless device when around gasoline or diesel-fuel pumps and before filling your vehicle with fuel.
- Switch OFF your wireless device in hospitals and any other place where medical equipment may be in use.

Sécurité des fréquences radio

En raison de la possibilité d'interférences de radiofréquence (RF), il est important que vous suiviez une quelconque réglementation concernant l'utilisation du matériel radio. Suivez les conseils de sécurité ci-dessous.

Attention: Maintenir une distance d'au moins 20 cm (8 po) entre l'antenne du récepteur et le corps de l'utilisateur ou à proximité de personnes. Le modem n'est pas conçu pour, ou destinés à être utilisés dans les applications portables, moins de 20 cm du corps de l'utilisateur.

Vérifiez vos normes locales touchant les distances de sécurité, etc..

- Fonctionnement de votre appareil à proximité d'autres appareils électroniques peuvent causer des interférences si l'équipement est insuffisamment protégé. Respectez les panneaux d'avertissement et les recommandations du fabricant.
- Différentes industries et les entreprises limitent l'utilisation des appareils cellulaires. Respectez les règlements sur l'utilisation des équipements radio dans les dépôts de carburant, les usines chimiques, ou lorsque des opérations de dynamitage sont en cours. Suivez restrictions pour n'importe quel environnement où vous utilisez l'appareil.
- Ne pas placer l'antenne à l'extérieur.
- Éteignez votre appareil sans fil dans un avion. Utilisant des dispositifs électroniques portables dans un avion peut mettre en danger le fonctionnement de l'avion, peut perturber le réseau cellulaire, et est illégal. Le

non-respect de cette restriction peut entraîner la suspension ou le refus des services cellulaires au contrevenant, une action en justice, ou les deux.

- Éteignez votre appareil sans fil lorsque autour de l'essence ou pompes diesel-carburant et avant de remplir votre véhicule avec du carburant.
- Éteignez votre appareil sans fil dans les hôpitaux et tout autre endroit où l'équipement médical peut être utilisé.

Interference with Pacemakers and Other Medical Devices

Potential interference

Radiofrequency energy (RF) from cellular devices can interact with some electronic devices. This is electromagnetic interference (EMI). The FDA helped develop a detailed test method to measure EMI of implanted cardiac pacemakers and defibrillators from cellular devices. This test method is part of the Association for the Advancement of Medical Instrumentation (AAMI) standard. This standard allows manufacturers to ensure that cardiac pacemakers and defibrillators are safe from cellular device EMI.

The FDA continues to monitor cellular devices for interactions with other medical devices. If harmful interference occurs, the FDA will assess the interference and work to resolve the problem.

Precautions for pacemaker wearers

If EMI occurs, it could affect a pacemaker in one of three ways:

- Stop the pacemaker from delivering the stimulating pulses that regulate the heart's rhythm.
- Cause the pacemaker to deliver the pulses irregularly.
- Cause the pacemaker to ignore the heart's own rhythm and deliver pulses at a fixed rate.

Based on current research, cellular devices do not pose a significant health problem for most pacemaker wearers. However, people with pacemakers may want to take simple precautions to be sure that their device doesn't cause a problem.

- Keep the device on the opposite the side of the body from the pacemaker to add extra distance between the pacemaker and the device.
- Avoid placing a turned-on device next to the pacemaker (for example, don't carry the device in a shirt or jacket pocket directly over the pacemaker).

Vehicle Safety

- Do not use this device while driving.
- Respect national regulations on the use of cellular devices in vehicles.
- If incorrectly installed in a vehicle, operating the wireless device could interfere with the vehicle's electronics. To avoid such problems, use qualified personnel to install the device. The installer should verify the vehicle electronics are protected from interference.
- Using an alert device to operate a vehicle's lights or horn is not permitted on public roads.
- UL evaluated this device for use in ordinary locations only. UL did **NOT** evaluate this device for installation in a vehicle or other outdoor locations. UL Certification does not apply or extend to use vehicles or outdoor applications or in ambient temperatures above 40° C.

Device Maintenance

- Do not attempt to disassemble the device. There are no user serviceable parts inside.
- Do not expose your device to any extreme environment where the temperature or humidity is high.
- Do not expose the device to water, rain, or spilled beverages. It is not waterproof.
- Do not place the device alongside computer discs, credit or travel cards, or other magnetic media. The information contained on discs or cards may be affected by the phone.
- Using accessories that Multi-Tech has not authorized or that are not compliant with Multi-Tech's accessory specifications may invalidate the warranty.

If the device is not working properly, contact Multi-Tech Technical Support.

User Responsibility

- Respect all local regulations for operating your wireless device. Use the security features to block unauthorized use and theft.

Analog Telecom Safety Warnings

Before servicing, disconnect this product from its power source and telephone network. Also:

- Never install telephone wiring during a lightning storm.
- Never install a telephone jack in wet locations unless the jack is specifically designed for wet locations.
- Use this product with UL and cUL listed computers only.
- Never touch uninsulated telephone wires or terminals unless the telephone line has been disconnected at the network interface.
- Use caution when installing or modifying telephone lines.
- Avoid using a telephone during an electrical storm. There may be a remote risk of electrical shock from lightning.
- Do not use a telephone in the vicinity of a gas leak.

CAUTION: To reduce the risk of fire, use only 26 AWG or larger UL Listed or CSA Certified telecommunication line cord.

Avertissements de sécurité télécom analogique

Avant de l'entretien, débrancher ce produit de son réseau d'alimentation et de téléphone. également:

- Ne jamais installer du câblage téléphonique pendant un orage électrique.
- Ne jamais installer de prises téléphoniques à des endroits mouillés à moins que la prise ne soit conçue pour de tels emplacements.
- Utilisez ce produit avec UL et cUL ordinateurs répertoriés seulement.
- Ne jamais toucher fils ou des bornes téléphoniques non isolés à moins que la ligne téléphonique n'ait été déconnectée au niveau de l'interface réseau.
- Faire preuve de prudence au moment d'installer ou de modifier des lignes téléphoniques.
- Éviter d'utiliser le téléphone pendant un orage électrique. Il peut y avoir un risque de choc électrique causé par la foudre.
- N'utilisez pas un téléphone à proximité d'une fuite de gaz.

ATTENTION: Pour réduire les risques d'incendie, utiliser uniquement des conducteurs de télécommunications 26 AWG au de section supérieure.

Chapter 6 – Labeling Requirements

Cellular Approvals and Labeling Requirements

Note: For MTSMC LTE models, refer to the MTSMC-Lxx Device Guide for labeling requirements.

Approvals and Certification

The Multi-Tech SocketModem is an industry and/or carrier approved modem. In most cases, when integrated and used with an antenna system that was part of the Multi-Tech modem certification, additional approvals or certifications are not required for the device you develop as long as the following are met. Note that EV-DO modems have a few exceptions.

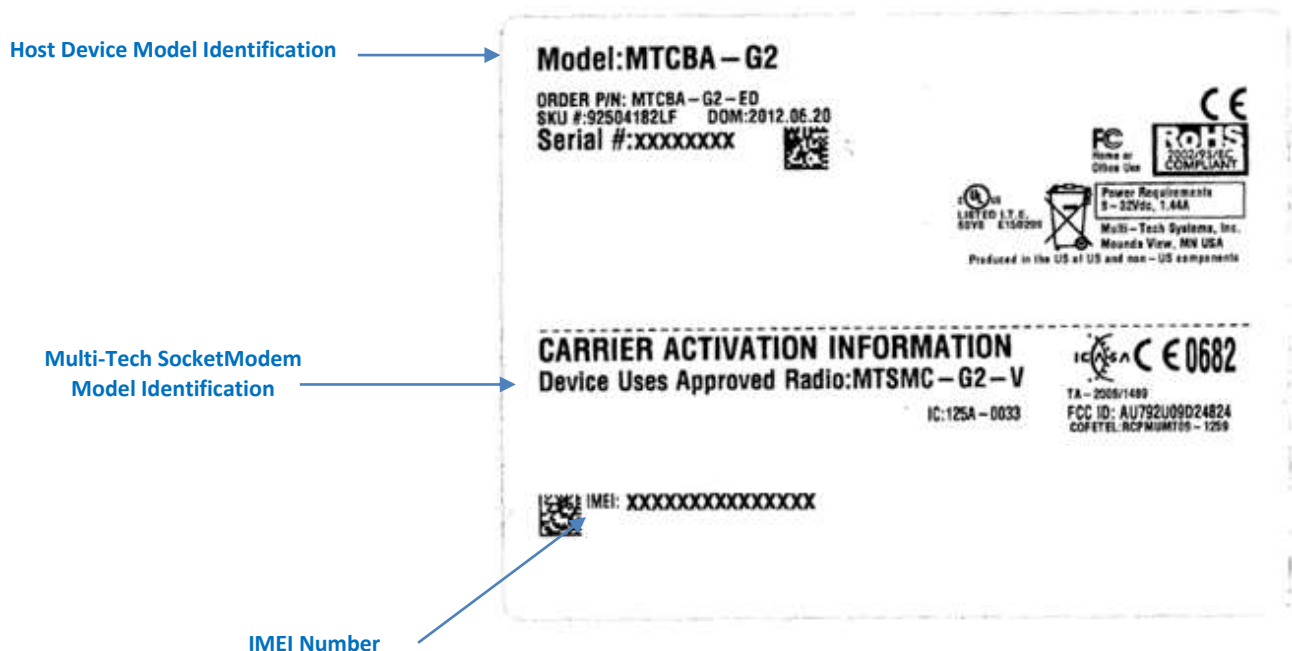
- **PTCRB Requirements (EDGE, GPRS and HSPA/HSDPA only)**
The antenna system cannot be altered.
- **Model Identification**
The Multi-Tech model identification allows the carrier to verify the modem as one of its approved models. This information is located on the modem's label.

Note: Both the host device and modem include labels. When the cellular carrier asks you to provide the modem's model identification, give the Multi-Tech cellular model identification, not the host device model. The ESN or IMEI number on the host device label will match that of the modem.

- **For C1, C2, and EV3 SocketModems:** The modem's MEID (Mobile Equipment Identifier) written in hexadecimal format is printed under the barcode on the modem.
- **For EV2:** The modem's ESN (Electronic Serial Number) is printed below the barcode.
- **For G2, G3, H3, and H5 SocketModems:** The modem's 15-character IMEI (International Mobile Equipment Identity) number is printed on the modem's label.

Example GPRS End Product Label

Note: Actual labels will vary depending on the regulatory approval markings and content.

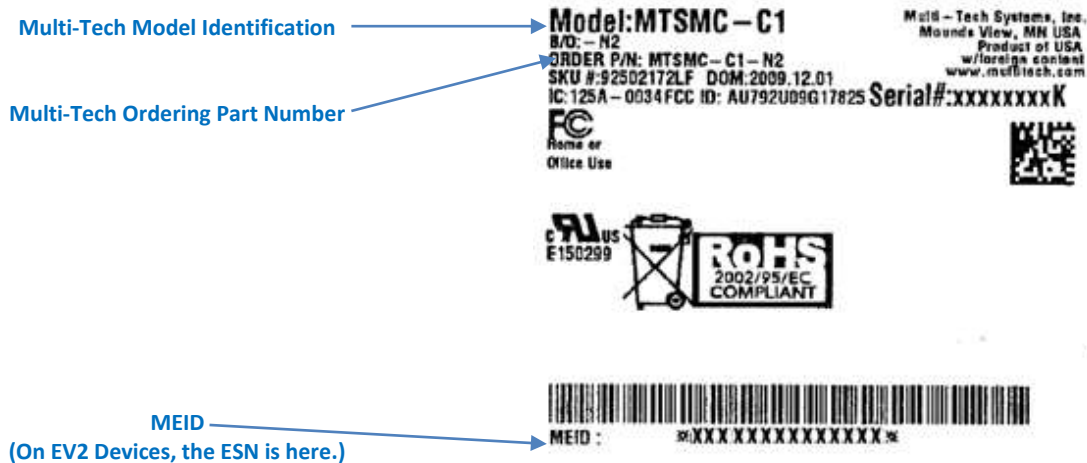


Example CDMA C1 SocketModem Label

Notes:

The label is shown larger than actual size.

Actual labels will vary depending on the regulatory approval markings and content.



Analog Labeling Requirements

United States Labeling Requirements (for Dial-Up Modems)

Telecom requirements apply to analog products only.

Approved terminal equipment (TE) and approved protective circuitry shall prominently display the following information using the format shown below:

- Responsible party or manufacturer
- Product Identification
- Equipment Code
- Ringer Equivalence
- Ringer Type
- Indication that the product meets the requirements of FCC Part 68

The information required by the first five items shall correspond to the records in the ACTA database of approved equipment. The required information shall be encoded in the following format:

US: AAAEQ##TXXX

Where:

- US: Is a fixed field that indicates the equipment meets all requirements of 47 CFR Part 68, including the requirements published by ACTA.
- AAA is the responsible party's Grantee Code obtained previously from the FCC's Common Carrier Bureau or currently from ACTA.
- EQ Is an equipment code indicating to the Service Provider any special signal handling or billing requirements. The equipment codes are listed in Annex A (normative).

- ## is the Ringer Equivalence Number without a decimal point (e.g. REN of 1.0 = 10, REN of 0.3 = 03). In the case of a “Z” ringer, ZZ shall appear. In the case of approved equipment without a network interface and equipment not connecting to circuits with analog ringing supplied then “NA” shall appear.
- T is the ringer type letter associated with the Ringer Equivalence Number, in accordance with the technical requirements. In the case of approved equipment without a network interface and equipment not connecting to circuits with analog ringing supplied, the letter “N” shall appear.
- XXX Is a product identifier, unique when combined with the responsible party’s Grantee Code, of at least one and up to nine alphanumeric characters (including one or more dashes (-) if desired. A dash shall not appear as the first or last character nor shall the identifier consist entirely of dashes). The responsible party shall define this identifier.

Label Physical Characteristics

The required information in the previous section shall be permanently affixed and legible without magnification. It may be etched, engraved, stamped, indelibly printed, or otherwise permanently marked. Alternatively, the required information may be permanently marked on a nameplate of metal, plastic or other material fastened to the enclosure by welding, riveting or with a permanent adhesive. Such a nameplate shall be able to last for the expected lifetime of the equipment and shall not be readily detachable.

Labeling Continuity and Changes

The labeling content and format requirements in effect when a product was approved shall be effective for the life of the product. The labeling content and format requirements in effect at approval shall also continue to be effective for modified products. However, the responsible party shall have the option of conforming a product's labeling to current content and format requirements at any time.

Other Label Requirements

Place the label in one of the following locations so it can be found after installation:

- On an outside surface
- Inside a readily available access door or panel
- On another readily accessible surface

For example, do not put the label on the rear of a permanently wall-mounted device where it is not readily accessible.

Canadian Labeling Requirements (for Dial-Up Modems)

The following requirements are established under section 69.3 of the Telecommunications Act for purposes of section 5 of the Telecommunications Apparatus Regulations.

Registered equipment shall bear the following identifying marks, and the Declaring Party shall ensure that these marks are permanently affixed to the equipment:

- a. The registration number — Specifications of this mark are given in the document: Self-Marking of the Certification/Registration Number on Terminal Equipment — Application Procedure and Agreement;
- and
- b. The model identification number under which the product was registered.

A statement of compliance with Industry Canada requirements, such as the one given below, shall accompany each unit of equipment whether registered under this procedure or previously certified:

This product meets the applicable Industry Canada technical specifications.

For terminal equipment intended for connection to loop-start or ground-start interfaces, the Ringer Equivalence Number (REN) must be calculated as per Section 1.8 of CS-03, Part I. A REN higher than that determined may be assigned by manufacturers to allow for production variations. The REN must be marked on the terminal equipment itself or added to the note below. A note similar to the following shall accompany each unit of equipment whether registered under this procedure or previously certified:

The Ringer Equivalence Number is an indication of the maximum number of devices allowed to be connected to a telephone interface. The termination on an interface may consist of any combination of devices subject only to the requirement that the sum of the RENs of all the devices does not exceed five.

Pursuant to section 69.3 of the Telecommunications Act, certified or self-declared TE will bear a valid identifying certification number or registration number. The marking of the certification or registration number on the product shall be as follows:

- a. TAC holder/DP will be responsible for permanently affixing the certification/registration number on the TE. The certification/registration number (see example below) identifies Certified or self-declared TE to the public, representatives of the telecommunications common carriers, the Department, and other interested parties. The letter height must be no less than 1.5 mm and the letters must be legible without magnification.
- b. For integrated devices, e.g. a modem or one that is intended to become a sub-assembly of host equipment e.g. a data terminal, computer etc. that are designed to interface directly with the network, the certification/registration number shall be affixed to the integrated device itself.
- c. The certification/registration number for a packaged TE will denote that the total package has been registered. However, the marking will normally be placed on that unit of the package which connects to the network; e.g., in a PBX the marking will be placed on the common equipment which connects to the network, rather than on plug-in components which may be added later. The Terminal Equipment List will show the common equipment but not the standard station apparatus or any proprietary station apparatus.
- d. The marking format of the certification/registration number is as follows:
IC: XXXXXX-YYYYYYYY

Where:

The letters "IC" have no other meaning or purpose than to identify the Industry Canada certification/registration number, and

"XXXXXX-YYYYYYYY" is the certification/registration number; "XXXXXX" is the Company Number¹ (CN); it consists of up to six alphanumeric characters (A-Z, 0-9) assigned by Industry Canada; and "YYYYYYYY" is the Unique Product Number (UPN); it consists of up to eight alphanumeric characters (A-Z, 0-9) assigned by the applicant. Other characters, such as & # *-, may not be used. Alphabetic characters must be capitalized.

Note: The Company number of registered equipment ends with an alphabetic character.

- e. Certification numbers granted prior to the implementation of the above marking format are grandfathered.
 - i. For previously certified TE, the self-marking format shall consist of the old certification number preceded by "IC:" For example, if the certification number is "123 1234 A", then the self-mark would read "IC: 123 1234 A".

- ii. For a new model that is registered to a family of previously certified TE, the self-marking format shall be: IC: XXXXXX-ZZZZZZZZ

Where:

- “XXXXXX” is the Company Number, as in (d) above; and
- “ZZZZZZZ” is either the old certification number minus the old company number, or a new Unique Product Number assigned by the applicant. For example, if a new model is registered to the family of products with certification number “123 1234 A”, and that the Company Number for the registration is “123A”, then the self-mark for this new model would read “IC: 123A-1234 A”. If the applicant decides to replace “1234 A” with a new UPN, say “5678”, then the self-mark would read “IC: 123A-5678”.

Example Analog SocketModem Label

Note: Actual labels will vary depending on the regulatory approval markings and content.



Serial Label

This label shows the modem model (M/N), build option (B/O), date of manufacture (DOM), serial number, and North America and European Union regulatory information.

Regulatory Label for Internal Modem: MT9234SMI
 Date of manufacture (DOM) is printed on Internal Modem.
 ORDER P/N: MT9234SMI GLOBAL REG. LABEL
 SKU# 20043710L



Complies with 47 CFR Part 68
 Reg. US: AU7HMD1BMT9234SMI REN: 0.1B
 For Home or Office Use
 COPTEL: TTDHUMT06 - 698
 IC: 125A - 0021
 Chile: SUBTEL 3778

Argentina: CNC - 54 - 4P19
 Indonesia: 03958/POSTEL/2006
 Philippines: ESD - CPE - 0501146

TELEPERMIT
 This Multi-Tech MT9234SMI modem is Approved for Connection to the Telecom Network
 PTC 211/06/043 RN - 0.9
 CCAB06M1003077

Complies with MOA Standards DB - 00628
 ANATEL
 Agência Nacional de Telecomunicações 0862 - 09 - 2742
 (01)87899829383222

AD06-022001
 A005676

TE - 2007/047

Complies with MOA Standards DB - 00628
 ANATEL
 Agência Nacional de Telecomunicações 0862 - 09 - 2742
 (01)87899829383222

Regulatory Label

Available from Multi-Tech by request.

Russia: Д-ТФ-0136

型号: MT9234SMI
 摩迪泰克系统有限公司 [美国制造]
 美国明尼苏达州圣路易市
 伍戴尔路2205号, 邮政编码55112

Имя владельца: _____
 Адрес: _____
 Контакт: _____
 E-mail: _____
 Телефон: _____
 Факс: _____

Chinese Labeling Requirement

For the MT5692SMI SocketModem, the following graphics need to appear on any product in China.



仅适用于在非热带气候条件下安全使用



仅适用于在海拔2000m以下安全使用

Chapter 7 – Regulatory Information

Note: For MTSMC LTE models, refer to the MTSMC-Lxx Device Guide for regulatory information.

Telecom Approvals for Analog Modems

Multi-Tech’s analog SocketModems are designed and approved for connection to the public switched telephone network in more than 50 countries or regions worldwide. Approvals are host independent, which means our certification efforts can be transferred directly to your end product with proper labeling on the OEM equipment. We support our approvals by supplying our customers with supporting documentation and offering a compliance label with country or regional approval logos and approval numbers to be attached to an end product. Refer to a device’s product ordering information to identify the models available for your region.

Multi-Tech completes testing and obtains certification test reports or certificates near the initial product release. After the initial release, products may be tested and certified for other countries or regions. For a current list of SocketModem approvals, check the Multi-Tech Systems www.multitech.com/global/approvals.go or contact Multi-Tech at oemsales@multitech.com.

Notes:

Some countries or regions have special import rules that require us assist customers with additional applications. Contact Multi-Tech at oemsales@multitech.com for more information.

Country or regional codes are usually set through AT commands. For details, check the AT Command Guide for your model.

Country/Region-Specific Statements

EMC, Safety, and R&TTE Directive Compliance

Note: For MTSMC-H5 and MTSMC-G3 models, consult your device guide for specific CE mark information.



The CE mark is affixed to this product to confirm compliance with the following European Community Directives:

Council Directive 2004/108/EC of 15 December 2004 on the approximation of the laws of Member States relating to electromagnetic compatibility;

and

Council Directive 2006/95/EC of 12 December 2006 on the harmonization of the laws of Member States relating to electrical equipment designed for use within certain voltage limits;

and

Council Directive 1999/5/EC of 9 March 1999 on radio equipment and telecommunications terminal equipment and the mutual recognition of their conformity.

International Modem Restrictions

Some dialing and answering defaults and restrictions may vary for international modems. Changing settings may cause a modem to become non-compliant with national regulatory requirements in specific countries. Also note that some software packages may have features or lack restrictions that may cause the modem to become non-compliant.

47 CFR Part 15 Regulation Class B Devices

This equipment has been tested and found to comply with the limits for a Class B digital device, pursuant to part 15 of the FCC Rules. These limits are designed to provide reasonable protection against harmful interference in a residential installation. This equipment generates, uses, and can radiate radio frequency energy and, if not installed and used in accordance with the instructions, may cause harmful interference to radio communications. However, there is no guarantee that interference will not occur in a particular installation. If this equipment does cause harmful interference to radio or television reception, which can be determined by turning the equipment off and on, the user is encouraged to try to correct the interference by one or more of the following measures:

- Reorient or relocate the receiving antenna.
- Increase the separation between the equipment and receiver.
- Connect the equipment into an outlet on a circuit different from that to which the receiver is connected.
- Consult the dealer or an experienced radio/TV technician for help.

Warning: Changes or modifications to this unit not expressly approved by the party responsible for compliance could void the user's authority to operate the equipment.

EMC Requirements for Industry Canada

This Class B digital apparatus meets all requirements of the Canadian Interference-Causing Equipment Regulations.

Cet appareil numérique de la classe B respecte toutes les exigences du Règlement Canadien sur le matériel brouilleur.

This device complies with Industry Canada RSS Appliance radio exempt from licensing. The operation is permitted for the following two conditions:

1. the device may not cause harmful interference, and
2. the user of the device must accept any interference suffered, even if the interference is likely to jeopardize the operation.

Le présent appareil est conforme aux CNR d'Industrie Canada applicables aux appareils radio exempts de licence. L'exploitation est autorisée aux deux conditions suivantes:

1. l'appareil ne doit pas produire de brouillage, et
2. l'utilisateur de l'appareil doit accepter tout brouillage radioélectrique subi, même si le brouillage est susceptible d'en compromettre le fonctionnement.

47 CFR Part 68 Telecom

1. This equipment complies with Part 68 of the 47 CFR rules and the requirements adopted by the ACTA. Located on this equipment is a label that contains, among other information, the registration number and Ringer Equivalence Number (REN) for this equipment or a product identifier in the format:

For current products: US:AAAEQ##Txxxx.

For legacy products: AU7USA-xxxx-xx-x.

If requested, this number must be provided to the telephone company.

2. A plug and jack used to connect this equipment to the premises wiring and telephone network must comply with the applicable 47 CFR Part 68 rules and requirements adopted by the ACTA. It's designed to be connected to a compatible modular jack that is also compliant.
3. The Ringer Equivalence Number (REN) is used to determine the number of devices that may be connected to a telephone line. Excessive RENs on a telephone line may result in the devices not ringing in response to an incoming call. In most but not all areas, the sum of RENs should not exceed five (5.0). To be certain of the number of devices that may be connected to a line, as determined by the total RENs, contact the local telephone company. For products approved after July 23, 2001, the REN for this product is part of the product identifier that has the format US:AAAEQ##Txxxx. The digits represented by ## are the REN without a decimal point (e.g., 03 is a REN of 0.3). For earlier products, the REN is separately shown on the label.
4. If this equipment causes harm to the telephone network, the telephone company will notify you in advance that temporary discontinuance of service may be required. But if advance notice isn't practical, the telephone company will notify the customer as soon as possible. Also, you will be advised of your right to file a complaint with the FCC if you believe it is necessary.
5. The telephone company may make changes in its facilities, equipment, operations or procedures that could affect the operation of the equipment. If this happens, the telephone company will provide advance notice in order for you to make necessary modifications to maintain uninterrupted service.
6. If trouble is experienced with this equipment, please contact Multi-Tech Systems, Inc. at the address shown below for details of how to have the repairs made. If the equipment is causing harm to the telephone network, the telephone company may request that you disconnect the equipment until the problem is resolved.
7. Connection to party line service is subject to state tariffs. Contact the state public utility commission, public service commission or corporation commission for information.
8. No repairs are to be made by you. Repairs are to be made only by Multi-Tech Systems or its licensees. Unauthorized repairs void registration and warranty.
9. If your home has specially wired alarm equipment connected to the telephone line, ensure the installation of this equipment does not disable your alarm equipment.
If you have questions about what will disable alarm equipment, consult your telephone company or a qualified installer.
10. Connection to party line service is subject to state tariffs. Contact the state public utility commission, public service commission or corporation commission for information.
11. This equipment is hearing aid compatible.
12. Manufacturing Information on telecommunications device (modem):

Manufacturer: Multi-Tech Systems, Inc.

Trade Name: Socket Modem SocketModem SocketModem

Model Number: MT9234SMI MT5692SMI MT2492SMI

Registration No: US:AU7MM01BMT9234SMI US:AU7MM01BMT5692SMI US:AU7MM01B2492SMI

Ringer Equivalence: 0.1B

Modular Jack (USOC): RJ11C or RJ11W (single line)
 Service Center in USA: Multi-Tech Systems, Inc.
 2205 Woodale Drive
 Mounds View, MN 55112 USA
 (763) 785-3500
 (763) 785-9874 Fax

South African Statement

This modem must be used in conjunction with an approved surge protection device.

Thailand Approval for MT9234SMI and MT5692SMI

This telecom device conforms to NTC¹ requirements.

¹NTC is the National Telecommunications Commission, Thailand's telecommunications regulator.

“เครื่องโทรคมนาคมและอุปกรณ์นี้ มีความสอดคล้องตามข้อกำหนดของ กทช.”

New Zealand Telecom Warning Notice

1. The grant of a Telepermit for any item of terminal equipment indicates only that Telecom has accepted that the item complies with minimum conditions for connection to its network. It indicates no endorsement of the product by Telecom, nor does it provide any sort of warranty. Above all, it provides no assurance that any item will work correctly in all respects with another item of Telepermitted equipment of a different make or model, nor does it imply that any product is compatible with all of Telecom's network services.

This equipment is not capable under all operating conditions of correct operating conditions of correct operation at the higher speed which it is designated. 33.6 kbps and 56 kbps connections are likely to be restricted to lower bit rates when connected to some PSTN implementations. Telecom will accept no responsibility should difficulties arise in such circumstances.

2. Immediately disconnect this equipment should it become physically damaged, and arrange for its disposal or repair.
3. This modem shall not be used in any manner which could constitute a nuisance to other Telecom customers.
4. This device is equipped with pulse dialing, while the Telecom standard is DTMF tone dialing. There is no guarantee that Telecom lines will always continue to support pulse dialing.

Use of pulse dialing, when this equipment is connected to the same line as other equipment, may give rise to 'bell tinkle' or noise and may also cause a false answer condition. Should such problems occur, the user should NOT contact the Telecom Faults Service.

The preferred method of dialing is to use DTMF tones, as this is faster than pulse (decadic) dialing and is readily available on almost all New Zealand telephone exchanges.

5. Warning Notice: No '111' or other calls can be made from this device during a mains power failure.
6. This equipment may not provide for the effective hand-over of a call to another device connected to the same line.
7. Some parameters required for compliance with Telecom's Telepermit requirements are dependent on the equipment (PC) associated with this device. The associated equipment shall be set to operate within the following limits for compliance with Telecom's Specifications:

For repeat calls to the same number:

- There shall be no more than 10 call attempts to the same number within any 30 minute period for any single manual call initiation, and
- The equipment shall go on-hook for a period of not less than 30 seconds between the end of one attempt and the beginning of the next attempt.

For automatic calls to different numbers:

- The equipment shall be set to ensure that automatic calls to different numbers are spaced such that there is no less than 5 seconds between the end of one call attempt and the beginning of another.
8. For correct operation, total of the RN's of all devices connected to a single line at any time should not exceed 5.

Brazil Approval for the MT9234SMI

This product has been homologated by ANATEL. This product meets the applied technical requirements in accordance with the procedures regulated by ANATEL. Reference of homologation of this product can be viewed in ANATEL web page: <http://www.anatel.gov.br>.



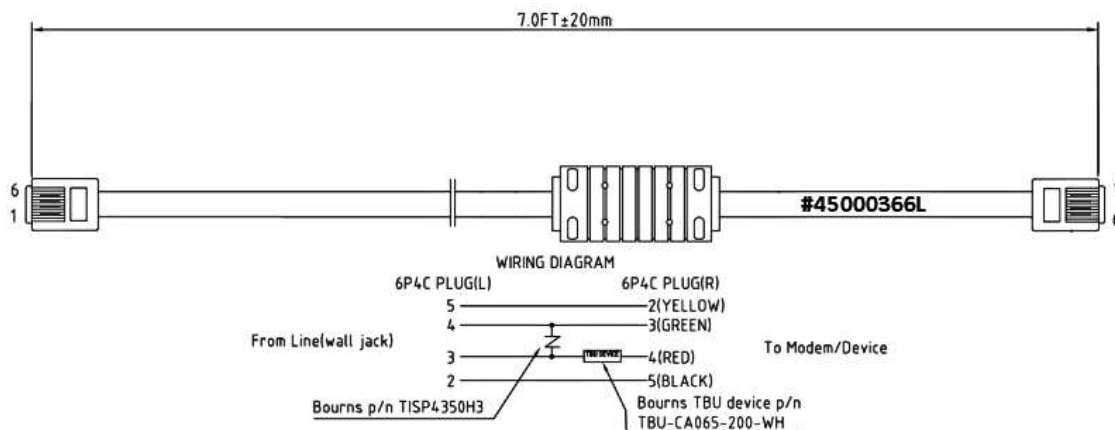
Brazil Bar Code for MT9234SMI

Brazil Certification

Model: MTxxxxxx special cable needed.

Attention: A special phone cable is required for regulatory compliance.

Um cabo especial para telefone é requerido para a conformidade regulatória.



Russian Statement

MT9234SMI is Russia approved, Declaration of Conformity # Д-ТФ-0710 valid till 20.02.2017 (for MT9234SMI).

MT5692SMI is Russia approved, Declaration of Conformity # Д-ТФ-0751 valid till 23.01.2018 (for MT5692SMI).

Korea Class B Statement

Equipment (Residential Use)

이 기기는 가정용(B급) 전자파적합기기로서 주로 가정에서 사용하는 것을 목적으로 하며, 모든 지역에서 사용할 수 있습니다.

Japan Requirements

These devices conform to (JATE) Japan Approval Institute for Telecommunications Equipment:

MT5692SMI – JATE Approval A09-0123001

MT9234SMI – JATE Approval AD06-0220001

Note: SocketModems are approved for product development in Japan only if they are removable from the manufactured product. The SocketModem must not be soldered into place.



Japan requires that your manufactured product documentation include SocketModem installation and removal instructions as well as connection to the PSTN network. The following text provides general steps to follow.

Installing the SocketModem in your Manufactured Product

1. If applicable, disconnect any power cord and peripherals you may have attached to your manufactured product.
2. Place the SocketModem on the board of your product. Be sure to match the pins on the SocketModem with the correct orientation on your board.
3. Be sure that the SocketModem is securely fastened to board so that it cannot come loose while handling or during shipping. Some examples of fasteners include nylon screws, tie wraps, etc. Remember that you cannot solder the SocketModem in place.
4. Put the cover on your product and connect the power and peripherals.

Removing the SocketModem from your Manufactured Product

1. Back up the current configuration of your manufactured product if you want to save it.
2. Record any information not stored in the configuration that you may want to reference.
3. Disconnect any power cord and peripherals from your manufactured product.
4. Remove the cover from your product.
5. Gently lift the SocketModem upwards while holding the board in place.

Connecting to the PSTN Network

To connect to a PSTN network, see the Tip and Ring Interface section in your model's Device Guide.

Other Countries

The above country-specific examples do not cover all countries with specific regulations; they are included to show you how each country may differ. If you have trouble determining your own country's requirements, check with Multi-Tech's Technical Support for assistance.

Waste Electrical and Electronic Equipment Statement

Note: This statement may be used in documentation for your final product applications.

WEEE Directive

The WEEE Directive places an obligation on EU-based manufacturers, distributors, retailers, and importers to take-back electronics products at the end of their useful life. A sister directive, ROHS (Restriction of Hazardous Substances) complements the WEEE Directive by banning the presence of specific hazardous substances in the products at the design phase. The WEEE Directive covers all Multi-Tech products imported into the EU as of August 13, 2005. EU-based manufacturers, distributors, retailers and importers are obliged to finance the costs of recovery from municipal collection points, reuse, and recycling of specified percentages per the WEEE requirements.

Instructions for Disposal of WEEE by Users in the European Union

The symbol shown below is on the product or on its packaging, which indicates that this product must not be disposed of with other waste. Instead, it is the user's responsibility to dispose of their waste equipment by handing it over to a designated collection point for the recycling of waste electrical and electronic equipment. The separate collection and recycling of your waste equipment at the time of disposal will help to conserve natural resources and ensure that it is recycled in a manner that protects human health and the environment. For more information about where you can drop off your waste equipment for recycling, please contact your local city office, your household waste disposal service or where you purchased the product.

July, 2005



REACH Statement

Registration of Substances

After careful review of the legislation and specifically the definition of an “article” as defined in EC Regulation 1907/2006, Title II, Chapter 1, Article 7.1(a)(b), it is our current view Multi-Tech Systems, Inc. products would be considered as “articles”. In light of the definition in § 7.1(b) which requires registration of an article only if it contains a regulated substance that “is intended to be released under normal or reasonably foreseeable conditions of use,” Our analysis is that Multi-Tech Systems, Inc. products constitute nonregisterable articles for their intended and anticipated use.

Substances of Very High Concern (SVHC)

Per the candidate list of Substances of Very High Concern (SVHC) published October 28, 2008 we have reviewed these substances and certify the Multi-Tech Systems, Inc. products are compliant per the EU “REACH” requirements of less than 0.1% (w/w) for each substance. If new SVHC candidates are published by the European Chemicals Agency, and relevant substances have been confirmed, that exceeds greater than 0.1% (w/w), Multi-Tech Systems, Inc. will provide updated compliance status.

Multi-Tech Systems, Inc. also declares it has been duly diligent in ensuring that the products supplied are compliant through a formalized process which includes collection and validation of materials declarations and selective materials analysis where appropriate. This data is controlled as part of a formal quality system and will be made available upon request.

Restriction of the Use of Hazardous Substances (RoHS)



Multi-Tech Systems, Inc.
Certificate of Compliance
2011/65/EU

Multi-Tech Systems confirms that its embedded products comply with the chemical concentration limitations set forth in the directive 2011/65/EU of the European Parliament (Restriction of the use of certain Hazardous Substances in electrical and electronic equipment - RoHS)

These Multi-Tech products do not contain the following banned chemicals¹:

- Lead, [Pb] < 1000 PPM
- Mercury, [Hg] < 1000 PPM
- Hexavalent Chromium, [Cr+6] < 1000 PPM
- Cadmium, [Cd] < 100 PPM
- Polybrominated Biphenyl, [PBB] < 1000 PPM
- Polybrominated Diphenyl Ether, [PBDE] < 1000 PPM

Environmental considerations:

- Moisture Sensitivity Level (MSL) =1
- Maximum Soldering temperature = 260C (in SMT reflow oven)

¹Lead usage in some components is exempted by the following RoHS annex, therefore higher lead concentration would be found in some modules (>1000 PPM);

–Resistors containing lead in a glass or ceramic matrix compound.

Information on HS/TS Substances According to Chinese Standards

In accordance with China's Administrative Measures on the Control of Pollution Caused by Electronic Information Products (EIP) # 39, also known as China RoHS, the following information is provided regarding the names and concentration levels of Toxic Substances (TS) or Hazardous Substances (HS) which may be contained in Multi-Tech Systems Inc. products relative to the EIP standards set by China's Ministry of Information Industry (MII).

Name of the Component	Hazardous/Toxic Substance/Elements					
	Lead (PB)	Mercury (Hg)	Cadmium (CD)	Hexavalent Chromium (CR6+)	Polybrominated Biphenyl (PBB)	Polybrominated Diphenyl Ether (PBDE)
Printed Circuit Boards	O	O	O	O	O	O
Resistors	X	O	O	O	O	O
Capacitors	X	O	O	O	O	O
Ferrite Beads	O	O	O	O	O	O
Relays/Opticals	O	O	O	O	O	O
ICs	O	O	O	O	O	O
Diodes/ Transistors	O	O	O	O	O	O
Oscillators and Crystals	X	O	O	O	O	O
Regulator	O	O	O	O	O	O
Voltage Sensor	O	O	O	O	O	O
Transformer	O	O	O	O	O	O
Speaker	O	O	O	O	O	O
Connectors	O	O	O	O	O	O
LEDs	O	O	O	O	O	O
Screws, Nuts, and other Hardware	X	O	O	O	O	O
AC-DC Power Supplies	O	O	O	O	O	O
Software / Documentation CDs	O	O	O	O	O	O
Booklets and Paperwork	O	O	O	O	O	O
Chassis	O	O	O	O	O	O

- X** Represents that the concentration of such hazardous/toxic substance in all the units of homogeneous material of such component is higher than the SJ/Txxx-2006 Requirements for Concentration Limits.
- O** Represents that no such substances are used or that the concentration is within the aforementioned limits.

Information on HS/TS Substances According to Chinese Standards (in Chinese)

依照中国标准的有毒有害物质信息

根据中华人民共和国信息产业部 (MIIT) 制定的电子信息产品 (EIP) 标准—中华人民共和国《电子信息产品污染控制管理办法》(第 39 号), 也称作中国 RoHS, 下表列出了 Multi-Tech Systems, Inc. 产品中可能含有的有毒物质 (TS) 或有害物质 (HS) 的名称及含量水平方面的信息。

成分名称	有害/有毒物质/元素					
	铅 (PB)	汞 (Hg)	镉 (CD)	六价铬 (CR6+)	多溴联苯 (PBB)	多溴二苯醚 (PBDE)
印刷电路板	O	O	O	O	O	O
电阻器	X	O	O	O	O	O
电容器	X	O	O	O	O	O
铁氧体磁环	O	O	O	O	O	O
继电器/光学部件	O	O	O	O	O	O
IC	O	O	O	O	O	O
二极管/晶体管	O	O	O	O	O	O
振荡器和晶振	X	O	O	O	O	O
调节器	O	O	O	O	O	O
电压传感器	O	O	O	O	O	O
变压器	O	O	O	O	O	O
扬声器	O	O	O	O	O	O
连接器	O	O	O	O	O	O
LED	O	O	O	O	O	O
螺丝、螺母以及其它五金件	X	O	O	O	O	O
交流-直流电源	O	O	O	O	O	O
软件/文档 CD	O	O	O	O	O	O
手册和纸页	O	O	O	O	O	O
底盘	O	O	O	O	O	O

X 表示所有使用类似材料的设备中有害/有毒物质的含量水平高于 SJ/Txxx-2006 限量要求。

O 表示不含该物质或者该物质的含量水平在上述限量要求之内。

Chapter 8 – Antennas, Cables, and GPS

Note: For MTSMC LTE models, refer to the MTSMC-Lxx Device Guide for antenna information.

Antenna System for Cellular Devices

Cellular/wireless performance depends completely on implementation and antenna design. Integrating the antenna system into the product is a critical part of the design process; it is essential to consider it early so your product design does not compromise performance. If you change the SocketModem's certified antenna system, specific network carriers, such as Sprint or Verizon, require product recertification. The antenna system is defined as the UFL connection point from the SocketModem through the specified cable to and including the specified antenna.

PTCRB Antenna Requirements

There cannot be any alteration to the authorized antenna system. The antenna system must maintain the same specifications. The antenna must be the same type, with similar in-band and out-of-band radiation patterns.

Authorized Antennas

Cellular SocketModems were approved with the following antennas.

For MTSMC-H5 and MTSMC-G3 models:

Manufacturer:	Laird Technologies
Mfg Model Number:	HEPTA-SM
Mfg Part Number:	MAF94300
Multi-Tech Part Number:	1 ANHB-1HRA 10 ANHB-10HRA 50 ANHB-50HRA

For MTSMC-EV3, MTSMC-C2, and all other cellular models:

Manufacturer:	Exceltek Electronics Ltd.
Mfg Model Number:	GSM Four Band Antenna
Mfg Part Number:	C0081-ANG0002
Multi-Tech Part Number:	1 ANQB-1HRA 10 ANQB-10HRA 50 ANQB-50HRA

HSPA / UMTS Antenna Requirements/Specifications

Category	Description
Frequency Range	824 – 960 MHz / 1710 – 1990 MHz / 1920 – 2170 MHz
Impedance	50 Ohms
VSWR	VSWR should not exceed 2.0:1 at any point across the bands of operation
Typical Radiated Gain	2 dBi on azimuth plane
Radiation	Omni-directional
Polarization	Vertical

EV-DO and CDMA Antenna Requirements/Specifications

Category	Description
Frequency Range	824 – 894 MHz / 1850 – 1990 MHz
Impedance	50 Ohms
VSWR	VSWR should not exceed 2.0:1 at any point across the bands of operation
Typical Radiated Gain	2 dBi on azimuth plane
Radiation	Omni-directional
Polarization	Linear vertical

GSM Antenna Requirements/Specifications

Category	Description
Frequency Range	824 – 960 MHz / 1710 – 1990 MHz
Impedance	50 Ohms
VSWR	VSWR should not exceed 2.0:1 at any point across the bands of operation
Typical Radiated Gain	2 dBi on azimuth plane
Radiation	Omni-directional
Polarization	Vertical

GPS Antenna Requirements/Specifications

Category	Description
Frequency	1575.24MHz
Impedance	50 Ohms
VSWR	2.0:1 Max
Gain	10-30dB
LNA Current Consumption	40mA Max
Noise Figure	< 2dB
Polarization	RHCP
Input voltage	3.0V ± 0.3V

Bluetooth Antenna Requirements/Specifications

Category	Description
Frequency Range	2402 to 2480 MHz
Impedance	50 Ohms
VSWR	2.0:1 Max
Typical Radiated Gain	2 dBi
Radiation	Omni-directional

Antennas Available from Multi-Tech

Part Number	Description	Quantity
Quad Band		
ANQB-1HRA	Hinged Right Angle 800/900/1800/1900 MHz Cellular Antenna, 7.5"	1
ANQB-10HRA	Hinged Right Angle 800/900/1800/1900 MHz Cellular Antenna, 7.5"	10
ANQB-50HRA	Hinged Right Angle 800/900/1800/1900 MHz Cellular Antenna, 7.5"	50
Penta Band		
ANPB-1HRA	Hinged Right Angle Penta Band Antenna	1
ANPB-10HRA	Hinged Right Angle Penta Band Antenna	10
Dual Band		
ANF1-1HRA	Hinged Right Angle 900/1800 MHz Cellular Antenna, 4"	1
ANF1-10HRA	Hinged Right Angle 900/1800 MHz Cellular Antenna, 4"	10
ANF1-50HRA	Hinged Right Angle 900/1800 MHz Cellular Antenna, 4"	50
ANCF2-1HRA	Hinged Right Angle 800/1900 MHz Cellular Antenna, 4"	1
ANCF2-10HRA	Hinged Right Angle 800/1900 MHz Cellular Antenna, 4"	10
ANCF2-50HRA	Hinged Right Angle 800/1900 MHz Cellular Antenna, 4"	50
Bluetooth		
ANBT-1	Hinged 2.4 MHz Bluetooth Antenna, 4"	1
ANBT-10	Hinged 2.4 MHz Bluetooth Antenna, 4"	10
Mag Mount Dual Band		
ANF1-1MMHW	Mag Mount 900/1800 MHz 1/2 Wave Cellular Antenna, 12.5"	1
ANF1-10MMHW	Mag Mount 900/1800 MHz 1/2 Wave Cellular Antenna, 12.5"	10
ANF1-50MMHW	Mag Mount 900/1800 MHz 1/2 Wave Cellular Antenna, 12.5"	50
ANF1-1MMQW	Mag Mount 900/1800 MHz 1/4 Wave Cellular Antenna, 4"	1
ANF1-10MMQW	Mag Mount 900/1800 MHz 1/4 Wave Cellular Antenna, 4"	10
ANF1-50MMQW	Mag Mount 900/1800 MHz 1/4 Wave Cellular Antenna, 4"	50
ANCF2-1MMHW	Mag Mount 850/1900 MHz 1/2 Wave Cellular Antenna, 12.5"	1
ANCF2-10MMHW	Mag Mount 850/1900 MHz 1/2 Wave Cellular Antenna, 12.5"	10
ANCF2-50MMHW	Mag Mount 850/1900 MHz 1/2 Wave Cellular Antenna, 12.5"	50
ANCF2-1MMQW	Mag Mount 850/1900 MHz 1/4 Wave Cellular Antenna, 4"	1
ANCF2-10MMQW	Mag Mount 850/1900 MHz 1/4 Wave Cellular Antenna, 4"	10
ANCF2-50MMQW	Mag Mount 850/1900 MHz 1/4 Wave Cellular Antenna, 4"	50
GPS		
ANGPS-1MM	Mag Mount GPS Antenna, 5 Meter Cable	1
ANGPS-10MM	Mag Mount GPS Antenna, 5 Meter Cable	10

Additional Sources of Bluetooth Antennas

Bluetooth antennas can be ordered from the following manufacturers. For the manufacturers listed without specific part numbers, be sure to select the antenna that meets the requirements/specifications.

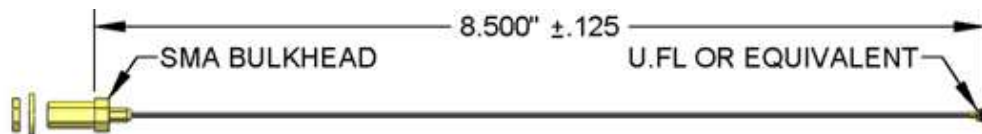
- www.nearson.com (part number: S131AH-2450S)
- www.ead-ltd.com
- www.lairdtech.com/Products/
- www.mobilemark.com
- www.taoglas.com
- www.pulseelectronics.com
- www.wanshih.com.tw

Coaxial Cable Specifications

SMA-to-UFL and RSMA-to-UFL Coax Cables

Coax Cable Specifications

Cable Type	Coaxial Cable
Attenuation	<1.0db
Connector Impedance	50 ohm
Maximum Cable Length	16" (40 cm)



Optional antenna cables can be ordered from Multi-Tech Systems, Inc.

Part Number	Description
CASMA-UFL-1	SMA-to-UFL Coax Cable (Single Pack)
CASMA-UFL-10	SMA-to-UFL Coax Cable (Ten Pack)
CARSMA-UFL-1	RSMA-to-UFL Coax Cable (Single Pack)
CARSMA-UFL-10	RSMA-to-UFL Coax Cable (Ten Pack)

Approved Antenna Cable Parts

GC Protronics: 20930C

Samtec: ASP-116785-01

The coax cable is an RG-178/U

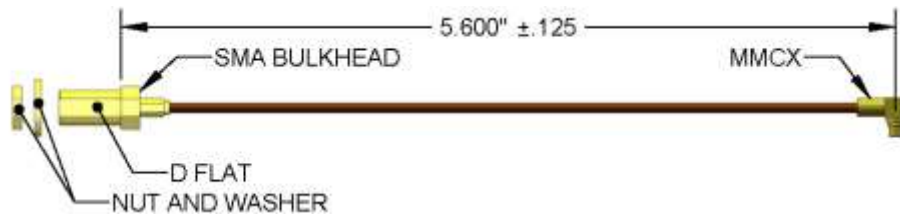
SMA-to-MMCX and RSMA-to-MMCX Coax Cable

The Developer Kit includes the following cables:

- The SMA-to-MMCX cable is included in the Developer Kit for use with SocketModem EDGE (MTSMC-E1).
- The RSMA-to-MMCX cable is included in the Developer Kit for use with SocketWireless Bluetooth (MTS2BTSMI).

Coax Cable Specifications

Cable Type	Coaxial Cable
Attenuation	<1.0db
Connector Impedance	50 ohm
Maximum Cable Length	16" (40 cm)



Optional antenna cables can be ordered from Multi-Tech Systems, Inc.

Part Number	Description
CASMA-MMCX-1	SMA-to-MMCX Coax Cable (Single Pack)
CASMA-MMCX-10	SMA-to-MMCX Coax cable (Ten Pack)
CARSMA-MMCX-1	Reverse SMA-to-MMCX Coax Cable (Single Pack)
CARSMA-MMCX-10	Reverse SMA-to-MMCX Coax Cable (Ten Pack)

SMA-to-MMCX Connector

An antenna with an SMA connector may be directly connected to a SocketModem GPRS/CDMA through a mating MMCX-to-SMA connector.

SMA-to-MMCX Connector Available from Amphenol

Amphenol

<http://www.amphenol.com/>

Order No: 908-31100



OEM Integration

Follow the FCC notes in this document and product specific FCC grants and limitations in the Device Guide. Otherwise, further testing and device approvals may be necessary.

FCC Notes

The antenna gain, including cable loss, for the device you are incorporating into your product design must not exceed the requirements at 850 MHz and 1900 MHz as specified by the FCC grant for mobile operations and fixed mounted operations as defined in FCC CFR Title 47 Part 2.1091 and FCC CFR Title 47 Part 1.1307 of the FCC rules for satisfying RF exposure compliance. Power output listed is conducted.

This device is a mobile device with respect to RF exposure compliance. The antenna(s) used for this transmitter must be installed to provide a separation distance of at least 20cm from all persons and must not be co-located or operated in conjunction with any antenna or transmitter except in accordance with FCC multi-transmitter product guidelines. Installers and end users must be provided with specific information required to satisfy RF exposure compliance for installations and final host devices. (See note under Grant Limitations.) Compliance of this device in all final host configurations is the responsibility of the Grantee.

Grant Limitations

This device has been granted modular approval for mobile applications. Portable applications may require further RF exposure (SAR) evaluations. Examples of mobile devices include wireless routers, desktop computers, utility meters, etc. Examples of portable applications include devices such as a laptop, USB dongle, mobile phone, tablet PC, and any device that can be worn on the body during use.

Your final product with this embedded device may need to pass FCC Part 15B.

Check the FCC Grant in the Device Guide to determine if this device has been evaluated or approved for simultaneous transmission. The simultaneous approval applies only to the devices listed in the FCC Grant. Evaluate any other simultaneous transmission conditions per the current FCC KDB447498 requirements. Simultaneous transmission requirements for mobile devices are contained in Section 7.2.

FCC KDB447498 D01 General RF Exposure Guidance v05

7.2. Transmitters used in mobile exposure conditions for simultaneous transmission operations

For mobile exposure host platform to qualify for simultaneous transmission MPE test exclusion, all transmitters and antennas in the host must qualify for standalone MPE test exclusion. When modular transmitters are used, the minimum test separation distance required for each simultaneous transmitting antenna installed in the host device must be greater than or equal to that approved for standalone transmission. When simultaneous transmission MPE test exclusion applies, transmitter modules may be incorporated in host devices according to Class I permissive change requirements to document the test exclusion conditions.

Simultaneous transmission MPE test exclusion applies when the sum of the MPE ratios for all simultaneous transmitting antennas incorporated in a host device, based on calculated or measured field strengths or power density, is ≤ 1.0 . The MPE ratio of each antenna is determined at the minimum test separation distance required by the operating configurations and exposure conditions of the host device, according to the ratio of field strengths or power density to MPE limit, at the test frequency. Either the maximum peak or spatially averaged results from measurements or numerical simulations may be used to determine the MPE ratios. Spatial averaging does not apply when MPE is estimated using simple calculations based on far-field plane-wave equivalent conditions. The antenna installation and operating requirements for the host device must meet the minimum test separation distances required by all antennas, in both standalone and simultaneous transmission operations, to satisfy compliance.

When one of the following test exclusion conditions is satisfied for all combinations of simultaneous transmission configurations, further equipment approval is not required to incorporate transmitter modules in host devices that operate in the mixed mobile and portable host platform exposure conditions. The grantee is responsible for documenting this according to Class I permissive change requirements. Antennas that qualify for standalone SAR test exclusion must apply the estimated standalone SAR to determine simultaneous transmission test exclusion.

- The $[\sum \text{of (the highest measured or estimated SAR for each standalone antenna configuration, adjusted for maximum tune-up tolerance) / 1.6 W/kg}] + [\sum \text{of MPE ratios}] \leq 1.0$.
- The SAR to peak location separation ratios of all simultaneous transmitting antenna pairs operating in portable exposure conditions are all ≤ 0.04 and the $[\sum \text{of MPE ratios}] \leq 1.0$.

When RF exposure test exclusion does not apply, simultaneous transmission evaluation is required for mixed mobile and portable exposure conditions. The enlarged zoom scan measurement and volume scan post-processing procedures in KDB 865664 must be applied to test the simultaneous transmitting antennas operating in portable exposure conditions for each simultaneous transmission configuration. The $[(\text{highest measured simultaneous transmission SAR, adjusted for maximum tune-up tolerance}) / 1.6 \text{ W/kg}] + [\sum \text{of MPE ratios}]$ must be ≤ 1.0 ; otherwise, compliance must be determined by the FCC on a case-by-case basis with respect to antenna-to-antenna and antenna-to-user separation, device form factor, operating requirements and exposure conditions, etc.

FCC Definitions

Mobile Device — FCC CFR Title 47 Part 2.1091 Radiofrequency radiation exposure evaluation:

(b) A mobile device is defined as a transmitting device designed to be used in other than fixed locations and to generally be used in such a way that a separation distance of at least 20 centimeters is normally maintained between the transmitters radiating structure(s) and the body of the user or nearby persons.

Portable Device — FCC CFR Title 47 Part 2.1093 Radiofrequency radiation exposure evaluation:

(b) A portable device is defined as a transmitting device designed to be used so that the radiating structure(s) of the device is/are within 20 centimeters of the body of the user.

Host Labeling

The following statements are required to be on the host label:

This device contains FCC ID: {Add the FCC ID of the specific device}

This device contains equipment certified under IC ID: {Add the IC ID of the specific device}

For additional labeling requirements, see [Labeling Requirements](#).

Antenna Diversity

Antenna diversity uses two receive antennas to improve the downlink connection (cell tower to mobile). It has no effect on the uplink (mobile to cell tower).

Antenna diversity is most useful in environments where the signal arrives at the device after bouncing off or around inside buildings or off other objects. The bounced signal may be attenuated by going through semi-transparent (to the signal) objects. Each signal alteration can change its magnitude, phase, orientation, and/or polarization. This complex environment exists in cities, inside buildings, in traffic, or any place in proximity to man-made objects. In this environment, signal paths from the cell tower form an interference pattern of peaks and nulls. These peaks and nulls can be very close together.

Antenna diversity provides an advantage in complex environments because if one receive antenna has a poor signal due to an interference null pattern, the other antenna is likely not in the null and will have better reception. The radio compares the reception from both receive antennas and uses the one with the strongest signal.

Antenna diversity is unnecessary when the device has an unobstructed signal path from the cell tower, such as in a flat area away from buildings. In good reception environments, the product application might prohibit using two receive antennas.

Using Antenna Diversity

Antenna diversity can be turned on and off with an AT command. When antenna diversity is on and a like or similar antenna is installed on both radio connectors, the radio automatically chooses the antenna with the best reception. Consult the AT Command Reference Guide for your device for the AT Command you should use to set diversity.

Placing External Antennas

Antennas are usually a quarter wavelength apart from each other. With multiband radios where the quarter wavelengths in each band are diverse from each other, this rule may not be practical. Choose spacing based on the band used most often or the band with connection difficulty. Some environments are harsher on particular bands. Multi-Tech products have antenna connectors at the best spacing for the product size.

Placing antennas in close proximity to each other is not optimal, but you can do it if necessary. It depends on the signal strength to and from each antenna.

Placing GPS Antennas

GPS antennas need a clear view of the sky. Position the GPS antenna so the diversity antennas do not block its view of the sky.

Selecting Antennas

Antenna choice should be optimized for the product and application. Typically, both diversity antennas are the same because either could be the main receive antenna. However, if the antenna connectors are too close together, use a similar antenna on a short cable for the second receive only antenna.

Antenna Approvals and Safety Considerations

Note the following:

- PTCRB and the carriers conduct antenna diversity tests.
- There are no EMC concerns about antenna diversity.
- All antennas need to have a minimum flammability rating.
- Safety requirements depend on your final product.
- Antennas are not approved for outdoor use. Customers should not extend antennas outside of the building.

Diversity and Power Draw

There are no significant power draw differences.

Global Positioning System (GPS)

This information applies only to the SocketModem models with the GPS option.

Technical Specifications

Category	Description
Receiver Type	L1 Frequency GPS C/A code SBAS Capable 51 Channel Acquisitions 14 Channel Tracking
Accuracy	Position 2.5m CEP Velocity 0.1m/sec Timing 300ns
Open Sky TTFF	Hot start 1 second Cold start 29 seconds average Reacquisition < 1s
Sensitivity Tracking	-161dBm
Update Rate	1Hz standard
Dynamics	4G
Operational Limits	Altitude < 18,000m or Velocity < 515m/s
Datum	Default WGS-84
Interface	UART
Protocol	NMEA-0183 V3.01, GGA, GLL, GSA, GSV, RMC, VTG

Features

- Tests 8 million time-frequency hypothesis per sec
- Open sky cold start 29 second
- Signal detection better than -161dBm
- Reacquisition sensitivity -155dBm
- Accuracy 2.5m CEP
- Multipath detection and suppression
- Supports active or passive antenna

Underwriters Laboratories Required Global Positioning System (GPS) Statement

Note the following information required by Underwriters Laboratories:

Underwriters Laboratories, Inc. ("UL") has not tested the performance or reliability of the Global Positioning System ("GPS") hardware, operating software or other aspects of this product. UL has only tested for fire, shock or casualties as outlined in UL's Standard(s) for Safety. UL60950-1 Certification does not cover the performance or reliability of the GPS hardware and GPS operating software. UL MAKES NO REPRESENTATIONS, WARRANTIES OR CERTIFICATIONS WHATSOEVER REGARDING THE PERFORMANCE OR RELIABILITY OF ANY GPS RELATED FUNCTIONS OF THIS PRODUCT.

Underwriters Laboratories requis Global Positioning System (GPS) Déclaration

Underwriters Laboratories Inc. (UL) n'a pas testé la performance ou la fiabilité du matériel du système mondial de localisation (GPS), du logiciel d'exploitation du GPS, ou d'autres aspects liés au GPS de ce produit. UL a uniquement réalisé les tests requis pour les risques d'explosion, d'incendie, de chocs électriques et de blessures conformément aux normes applicables relatives aux emplacements dangereux. La certification UL ne couvre pas la performance ou la fiabilité du matériel du GPS, du logiciel d'exploitation du GPS, ou d'autres aspects liés au GPS de ce produit. UL N'OFFRE AUCUNE REPRÉSENTATION, GARANTIE, NI CERTIFICATIONS QUELLES QU'ELLES SOIENT CONCERNANT LA PERFORMANCE OU LA FIABILITÉ DE TOUTES FONCTIONS LIÉES AU GPS DE CE PRODUIT.

Chapter 9 – Upgrading Modem Firmware

Note: For MTSMC LTE models, refer to the MTSMC-Lxx Device Guide for details on upgrading firmware.

Some SocketModems use semi-permanent firmware, which is stored in flash memory. The firmware stays in memory when the modem is turned off. For most modems, it can be updated when new features are added. Check the multitech.com/support.go page to determine if there is an upgrade for your model.

Note: Updating radio code takes special tools and certification; contact Multi-Tech if you have questions.

Model	Upgrade Method
Cellular SocketModems	
All SocketModem iCell	Refer to Upgrading with the Flash Wizard for upgrade instructions.
Non UIP -EV3 and -C2 SocketModems	Can be updated via the serial port. Contact Multi-Tech for assistance.
All other cellular SocketModems	Cannot be flash upgraded. Contact Multi-Tech for assistance.
Analog SocketModems	
SocketModem MT9234SMI	For Windows or Mac OSX, use the Flash Wizard.
SocketModem MT5692SMI or MT5692SMI-IP	For Linux, Flash Wizard utility for Linux. Refer to Upgrading with the Flash Wizard for both.
SocketModem MT2492SMI	Cannot be flash upgraded. Contact Multi-Tech for assistance.
Embedded Device Servers	
SocketEthernet IP MT100SEM-IP	For Windows or Mac OSX, use the Flash Wizard. For Linux, Flash Wizard utility for Linux. Refer to Upgrading with the Flash Wizard for both.
SocketWireless Bluetooth MTS2BTSMI	Cannot be flash upgraded. Contact Multi-Tech for assistance.

Upgrading with the Flash Wizard

You can use Multi-Tech’s Flash Wizard program to upgrade the SocketModem iCell, analog SocketModems and the SocketEthernet IP. You can download the Flash Wizard from the Multi-Tech site, but you need to contact Multi-Tech Support for the firmware update link.

To upgrade device using the Flash Wizard:

1. Go to <http://www.multitech.com/sw.go> and select SocketEthernetIP, SocketModem, or SocketModemIP from the product family drop-down list.
2. Download the Flash Wizard for your operating system and device model.
3. Install the Flash Wizard.
 - For Windows, run the installation program.
 - For Linux, follow the instructions provided with the download.
4. Use the link provided by Multi-Tech Support to download firmware for your device.
5. Save the firmware file to the Flash Wizard program directory. The default directory is C:\Program Files\Multi-Tech Systems\Firmware Wizard.
6. Launch the Flash Wizard and follow the on-screen directions.

Chapter 10 – Cellular SocketModems

Models and Documentation

Note that build options for each device are included in the model's Device Guide.

Modem	Models	Device Guide	AT Command Guide	USB Installation Guide
SocketModem Cell & iCell GPRS	MTSMC-G2	S000529	S000463 for G2 Modems S000469 for G2 Modems with IP S000457 Universal IP Commands	S000507
SocketModem Cell & iCell CDMA	MTSMC-C1	S000530	S000478 for C1 Modems S000457 Universal IP Commands	S000507
SocketModem iCell EV-DO	MTSMC-EV2	S000532	S000482 for EV2 Modems S000457 Universal IP Commands	S000507
SocketModem Cell & iCell HSPA+	MTSMC-H5	S000540	S000528 for H5 Modems S000457 Universal IP Commands	S000553
SocketModem Cell EDGE	MTSMC-E1	S000547	S000474 for EDGE E1 Modems	S000507
SocketModem Cell & iCell EV-DO	MTSMC-EV3	S000541	S000546 for EV-DO and CDMA Modems	S000569
SocketModem Cell & iCell CDMA	MTSMC-C2	S000542	S000546 for EV-DO and CDMA Modems	S000569
SocketModem Cell & iCell GPRS	MTSMC-G3	S000543	S000545 for GPRS Modems	N/A
SocketModem Cell LTE	MTSMC-LAT1 MTSMC-LEU1 MTSCM-LVW2	S000611	S000615 AT Commands Overview 80421ST10585A Rev 3 Telit LE910 AT Commands Reference Guide	S000616

Account Activation for Cellular Devices

Some Multi-Tech devices are pre-configured to operate on a specific cellular network. To use the device, you must set up a cellular data account with your service provider. Each service provider has its own process for adding devices to their network. To find activation steps for your device:

1. Go to <http://www.multitech.com/support>.
2. Select your device.
3. Scroll to **Activation** and click **Download**.

Chapter 11 – Analog SocketModems

Models and Documentation

Note that build options for each device are included in the model's Device Guide.

Modem	Models	Device Guide	AT Command Guide	Other Guides
SocketModem	MT9234SMI	S000534	S000434	S000262 Class 1 Fax Commands S000239 Class 2 Fax Commands
SocketModem	MT5692SMI	S000535	S000468 S000457 Universal IP Commands	
SocketModem	MT2492SMI	S000536	S000435	

Chapter 12 – Embedded Device Servers

Models and Documentation

Note that build options for each device are included in the model's Device Guide.

Modem	Models	Device Guide	AT Command Guide
SocketEthernet IP	MT100SEM-IP	S000537	S000457 Universal IP Commands
SocketWireless Bluetooth	MTS2BTSMI	S000539	S000360 SocketWireless Bluetooth

Chapter 13 – Recommended Parts

Disclaimer:

Multi-Tech Systems makes no warranty claims for vendor product recommendations listed below. Other vendor products may or may not operate satisfactorily. Multi-Tech System's recommended vendor products only indicate that the product has been tested in controlled conditions and was found to perform satisfactorily.

Notes:

These parts are RoHS compliant.

Use surface mount ferrites on Tip and Ring (T&R) to mitigate emission levels out the RJ-11 cable. 220pF capacitors are also used on T&R to reduce the common mode emissions that may be present in certain systems. See the Tip and Ring drawings in each analog SocketModem chapter.

The ferrite and capacitors also aid in reducing the effects of transients that may be present on the line.

Manufacturer	Part Number
Recommended Ferrite (SMT)	
Associated Component Technology (ACT)	CBG1206-600-40
Allied Components International	MLB20-601-RC
Recommended Ferrite (Thru-Hole)	
Associated Component Technology (ACT)	WB2-2.OT
Recommended Capacitor (SMT)	
NOVACAP	ES2211N221K502NXT
Murata Erie	GA355DR7GC221KY02L
Recommended Capacitor (Thru-Hole)	
Ever Grace Electronic Industrials	YP221K2EA7PS-8.0
Murata Erie	DE2B3KH221KA3B
Note: Capacitors used on T&R must have the Y2 safety rating.	
Recommended RJ-11 Connector	
Full Rise Electronic Co.	E5964-00P045
Recommended Sidactor	
Littlefuse	P4202SCLRP
ST Microelectronics	SMP100MC-400
Recommended Poly Switch Thermal Fuse (SMT)	
RayChem / Tyco Electronics	TS600-170F
Recommended Poly Switch Thermal Fuse (Thru-Hole)	
Meritek	MPTH600V150M-MT
RayChem / Tyco Electronics	TRF600-150
Note: The Fuse & Sidactor are required in order to comply with UL60950 for protection against over-voltages from power line cross. Fuse can be reset type.	
Common Mode Choke	
TDK	ZJYS51R5-2PT-01

Manufacturer	Part Number
Recommended Transceiver	
Analog Devices	ADM207EARZ
SIP Connector	
Neltron Industrial Co. (http://www.neltron.com.tw/)	2209S-XXG

Telecom

The RJ-11 connector must meet FCC Part 68 requirements. Refer to FCC Part 68 section 68.500 subpart F for connector specifications. A self-healing fuse is used in series with line to help prevent damage to the DAA circuit. This fuse is required in order to meet compliance regulations.

Note: Refer to Application Notes in the individual Device Guide for your model.

Index

A	
activation	64
analog modem types.....	9
antennas.....	55
Bluetooth	56
approvals.....	42
B	
Bluetooth Antenna Specifications	54
Brazil Regulatory Statement	46
C	
cellular modem types.....	9
China's Administrative Measures on the Control of Pollution	51
coaxial cables	56
compliance.....	42
country/regional codes.....	42
D	
developer kit	
contents	10
device server	
types.....	9
documentation	
analog SocketModems.....	65
cellular SocketModems.....	64
device servers	66
documentation overview	7
E	
electromagnetic interference considerations.....	17
electrostatic discharge control	17
EMC requirements	
Industry Canada	43
United States.....	43
EMC, Safety, and R&TTE Directive Compliance	42
EMI.....	17
F	
FCC.....	43
definitions.....	59
notes	58
firmware	63
Flash Wizard	63
G	
GPS Antenna Specifications	54
grant limitations	58
H	
handling precautions related to electrostatic discharge control.....	17
host labeling	59
HSPA/UMTS Antenna Specifications	53
I	
install	
device on board	31
SIM card.....	31
J	
Japan requirements.....	47
jumper	30
K	
Korea Class B statement	47
L	
label example	
CDMA.....	37
label requirements	35
labeling requirements.....	37

M

model identification.....35

N

New Zealand Telecom Warning Notice45

noise suppression16

P

parts, recommended for analog67

PC board layout guidelines16

phone warning statement18

power supply, attaching blades10

PTCRB requirements35

R

RF exposure guidance58

RoHS Compliance50

S

safety notice

 Telecom 34

safety notices..... 32

soldering 18, 19

South African Statement, Regulations..... 45

stereo jack feed jumper..... 30

T

Thailand Regulatory Statement..... 45

U

Universal IP 7

universal pin descriptions..... 12

USB design considerations..... 18

W

WEEE Directive 48