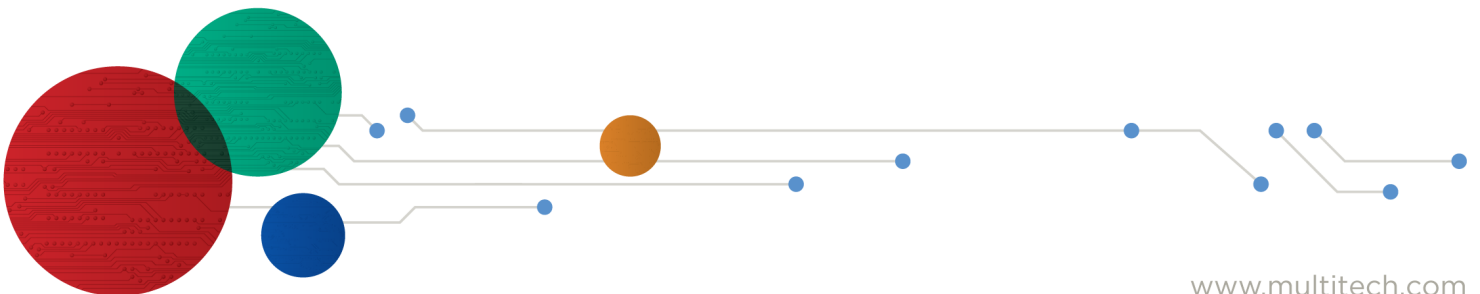




# Conduit<sup>®</sup> Base Station IP67 for Europe and Asia

---

MTCDTIP-L4E1 Hardware Guide



## MultiConnect Conduit IP67 Base Station Hardware Guide

Models: MTCDTIP-L4E1-266x-868, MTCDTIP-L4E1-267x-868, MTCDTIP-266x-868, MTCDTIP-267x-868

Part Number: S000796, Version 1.1

### Copyright

This publication may not be reproduced, in whole or in part, without the specific and express prior written permission signed by an executive officer of Multi-Tech Systems, Inc. All rights reserved. **Copyright © 2023 by Multi-Tech Systems, Inc.**

Multi-Tech Systems, Inc. makes no representations or warranties, whether express, implied or by estoppels, with respect to the content, information, material and recommendations herein and specifically disclaims any implied warranties of merchantability, fitness for any particular purpose and non-infringement.

Multi-Tech Systems, Inc. reserves the right to revise this publication and to make changes from time to time in the content hereof without obligation of Multi-Tech Systems, Inc. to notify any person or organization of such revisions or changes.

### Trademarks and Registered Trademarks

MultiTech, Conduit, and the MultiTech logo are registered trademarks and mPower is a trademark of Multi-Tech Systems, Inc. All other products and technologies are the trademarks or registered trademarks of their respective holders.

### Legal Notices

The MultiTech products are not designed, manufactured or intended for use, and should not be used, or sold or re-sold for use, in connection with applications requiring fail-safe performance or in applications where the failure of the products would reasonably be expected to result in personal injury or death, significant property damage, or serious physical or environmental damage. Examples of such use include life support machines or other life preserving medical devices or systems, air traffic control or aircraft navigation or communications systems, control equipment for nuclear facilities, or missile, nuclear, biological or chemical weapons or other military applications ("Restricted Applications"). Use of the products in such Restricted Applications is at the user's sole risk and liability.

MULTITECH DOES NOT WARRANT THAT THE TRANSMISSION OF DATA BY A PRODUCT OVER A CELLULAR COMMUNICATIONS NETWORK WILL BE UNINTERRUPTED, TIMELY, SECURE OR ERROR FREE, NOR DOES MULTITECH WARRANT ANY CONNECTION OR ACCESSIBILITY TO ANY CELLULAR COMMUNICATIONS NETWORK. MULTITECH WILL HAVE NO LIABILITY FOR ANY LOSSES, DAMAGES, OBLIGATIONS, PENALTIES, DEFICIENCIES, LIABILITIES, COSTS OR EXPENSES (INCLUDING WITHOUT LIMITATION REASONABLE ATTORNEYS FEES) RELATED TO TEMPORARY INABILITY TO ACCESS A CELLULAR COMMUNICATIONS NETWORK USING THE PRODUCTS.

The MultiTech products and the final application of the MultiTech products should be thoroughly tested to ensure the functionality of the MultiTech products as used in the final application. The designer, manufacturer and reseller has the sole responsibility of ensuring that any end user product into which the MultiTech product is integrated operates as intended and meets its requirements or the requirements of its direct or indirect customers. MultiTech has no responsibility whatsoever for the integration, configuration, testing, validation, verification, installation, upgrade, support or maintenance of such end user product, or for any liabilities, damages, costs or expenses associated therewith, except to the extent agreed upon in a signed written document. To the extent MultiTech provides any comments or suggested changes related to the application of its products, such comments or suggested changes is performed only as a courtesy and without any representation or warranty whatsoever.

### Contacting MultiTech

Sales	Support
sales@multitech.com	support@multitech.com
+1 (763) 785-3500	+1 (763) 717-5863

### Website

<https://www.multitech.com>

### Knowledge Base

For immediate access to support information and resolutions for MultiTech products, visit <https://www.multitech.com/kb.go>.

### Support Portal

To create an account and submit a support case directly to our technical support team, visit: <https://support.multitech.com>.

### Warranty

To read the warranty statement for your product, visit <https://www.multitech.com/legal/warranty>.

### World Headquarters

Multi-Tech Systems, Inc.  
2205 Woodale Drive, Mounds View, MN 55112  
USA

# Contents

<b>Chapter 1 – Conduit® IP67 Base Station .....</b>	<b>5</b>
Related Documentation .....	5
Installing the Device .....	5
Getting Started with mPower Models .....	5
Getting Started with mLinux Models .....	5
LoRa References .....	5
AT Command References .....	5
<b>Chapter 2 – Specifications and Related Information .....</b>	<b>6</b>
L4E1-Base Station Specifications .....	6
LoRa Specifications .....	7
Dimensions .....	8
LEDs and Connectors .....	9
Connectors .....	9
LEDs .....	9
LED Programming Notes .....	10
Power Draw .....	10
LE910 Telit Transmission Output Power .....	12
LoRa Transmission Output Power for MTAC-003 .....	12
MTAC-003E00 (868 MHz) .....	12
I2C Addresses .....	12
<b>Chapter 3 – Antennas .....</b>	<b>13</b>
Antenna .....	13
Pulse Omnidirectional Antenna .....	13
Antenna Specifications .....	13
GTT IP67 GPS/GLONASS Antenna .....	14
Antenna Specifications .....	14
GTT IP67 Wi-Fi Antenna .....	14
Antenna Specifications .....	15
GTT LTE N Type Antenna .....	15
Antenna Specifications .....	15
<b>Chapter 4 – Regulatory Information .....</b>	<b>17</b>
EMC, Safety, and R&TTE Directive (RED) Compliance .....	17
Serbia Approval .....	17
Philippines Approval .....	18
Vietnam Certification .....	18
<b>Chapter 5 – Safety Notices .....</b>	<b>19</b>
Installation Safety .....	19

Warnings and Cautions .....	19
Lithium Battery .....	20
User Responsibility.....	20
Device Maintenance .....	20
Vehicle Safety.....	20
Notice regarding Compliance with FCC, EU , and Industry Canada Requirements for RF Exposure.....	21
Radio Frequency (RF) Safety .....	21
Sécurité relative aux appareils à radiofréquence (RF).....	21
Interference with Pacemakers and Other Medical Devices .....	22
Potential interference .....	22
Precautions for pacemaker wearers .....	22
<b>Chapter 6 – Environmental Notices .....</b>	<b>23</b>
Waste Electrical and Electronic Equipment Statement .....	23
WEEE Directive.....	23
Instructions for Disposal of WEEE by Users in the European Union .....	23
Restriction of the Use of Hazardous Substances (RoHS) .....	24
REACH-SVHC Statement .....	24
Registration of Substances.....	24
Information on HS/TS Substances According to Chinese Standards (in Chinese) .....	25
Information on HS/TS Substances According to Chinese Standards .....	26

---

# Chapter 1 – Conduit® IP67 Base Station

---

MultiTech's Conduit IP67 Base Station is a ruggedized IoT gateway solution, specifically designed for outdoor LoRa® public or private network deployments. The Conduit IP67 Base Station resists the harshest environmental factors including moisture, dust, wind, rain, snow and extreme heat.

## Related Documentation

### Installing the Device

An installation guide ships with the MCDTIP and is also available at <https://www.multitech.com/brands/multiconnect-conduit-ip67>.

### Getting Started with mPower Models

Devices that ship with mPower have -2xxA in the model number.

- (S00727) mPower™ Edge Intelligence Conduit AEP Software Guide includes steps for configuring your device and provides details on the user interface.
- <http://www.multitech.net/developer/software/aep/> links to advanced information including getting started with LoRa devices and creating custom apps.

**Note:** Some users may have mLinux models converted to mPower. These will have mLinux model numbers.

### Getting Started with mLinux Models

Devices that ship with mLinux have -2xxL in the model number.

- [Getting Started with mLinux models](#) information is available on the multitech.net developer website.
- <http://www.multitech.net/developer/software/mlinux/> links to details about using mLinux

### LoRa References

- <http://www.multitech.net/developer/software/lora/> links to LoRa information.

### AT Command References

For models with cellular radio, the following AT Command Reference Guides are available at <https://www.multitech.com/brands/multiconnect-conduit-ip67>. Click your model, then select Manuals to find the AT Command Guide for your device.

- Telit LE910Cx AT Commands Reference 80502ST10950A

## Chapter 2 – Specifications and Related Information

### L4E1-Base Station Specifications

Base Station specifications depend on the hardware configuration for your model.

Category	Description
<b>General</b>	
Performance	LTE FDD Cat 4, 3GPP release compliant
	HSPA+ 21 / GPS fallback
	USB Port with Type A Receptacle, USB Interface is CDC-ACM compliant
TCP/IP Functions	FTP, SMTP, SSL, TCP, UDP
Frequency Bands (MHz)	4G: B1, B3, B7, B8, B20, B28A
	3G: B1, B3, B8
	2G: B3, B8
<b>Speed</b>	
Data Speed	LTE 150 Mbps downlin/50 Mbps uplink
	HSPA+ 42 Mbps downlink
<b>Physical Description</b>	
Weight	<b>V1.5:</b> 5.15 lbs (2.34 kg)
Dimensions	Refer to Dimension Drawing.
<b>Environment</b>	
*Operating Temperature	-30° C to +70° C
Humidity	20%-90% RH, non-condensing
<b>Power Requirements</b>	
Input Power	Power over Ethernet 37-57 Volts DC.
<b>Certifications</b>	
Country Approval	RED (EU)
Radio & EMC Compliance	EN 55022:2010
	EN 301 489
Safety Compliance	UL 60950-1 2nd Ed.
	IEC60950-1(EU)

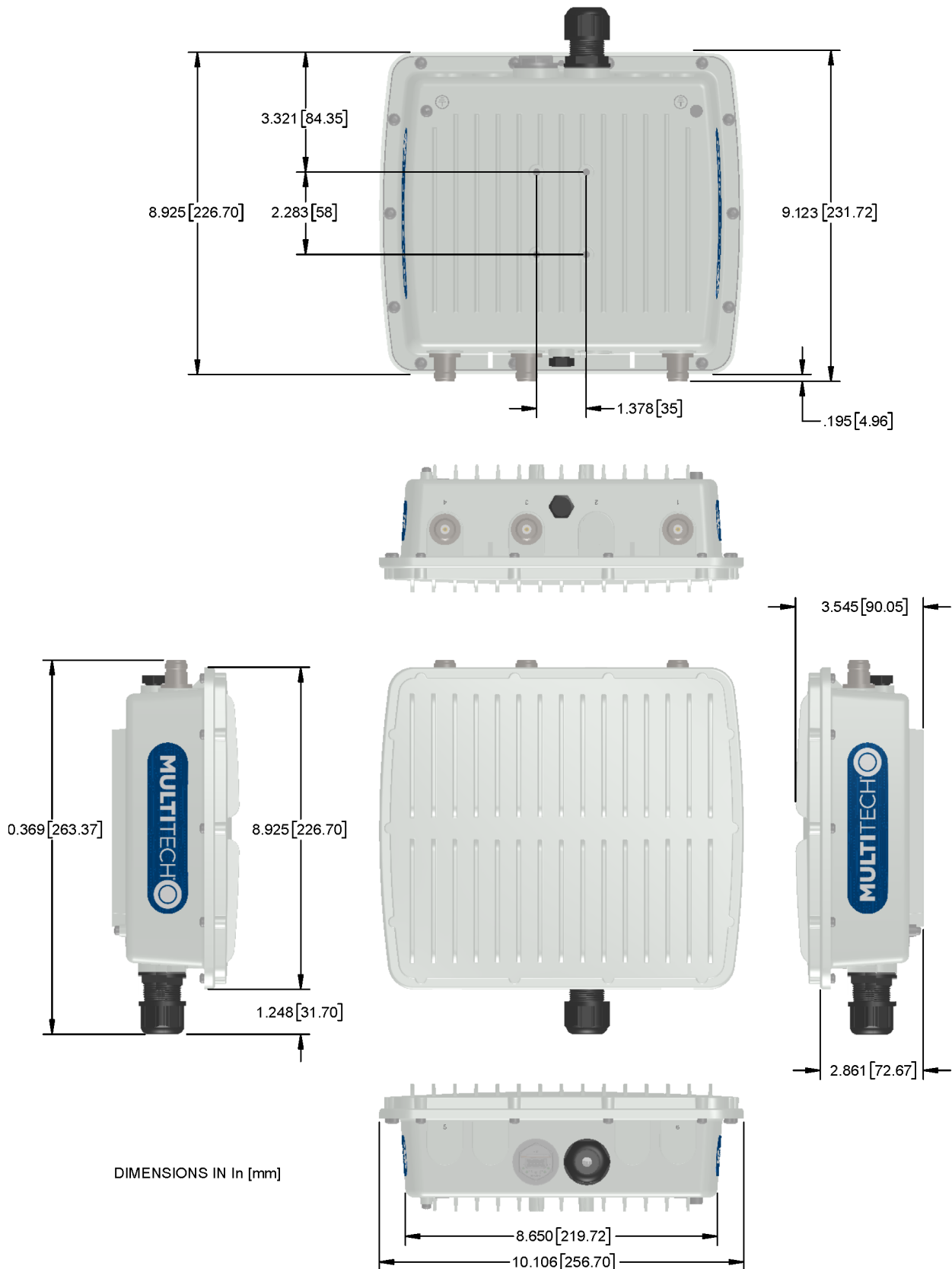
\*Please consult with MultiTech if interested in extended temperatures.

## LoRa Specifications

Depending on the model, your device has one or two LoRa radios. If the model number includes -868/2 or -915/2, the device has two LoRa radios.

Category	Description
<b>General</b>	
Standards	LoRaWAN 1.0.2 specifications
Radio Frequency	915 MHz ISM band
<b>Certifications and Compliance</b>	
EMC and Radio Compliance - Europe	EN 61000-3-3:2013
	EN 61000-3-2:2006 (Amended by A1:2009 and A2:2009)
	EN 55022:2010
	EN 300 220-1 v3.1.1
	EN 300 220-2 v3.1.1
	RSS-210
	EN 301 489-1 v2.2.0
	EN301 489-3 V2.1.1 (2017-3)
	EN 55032:2012
Safety Compliance - Europe	IEC 60950-1 2nd Ed. Am.1 and Am.2
Environment	IEC/CSA/UL60950-22 and IP67

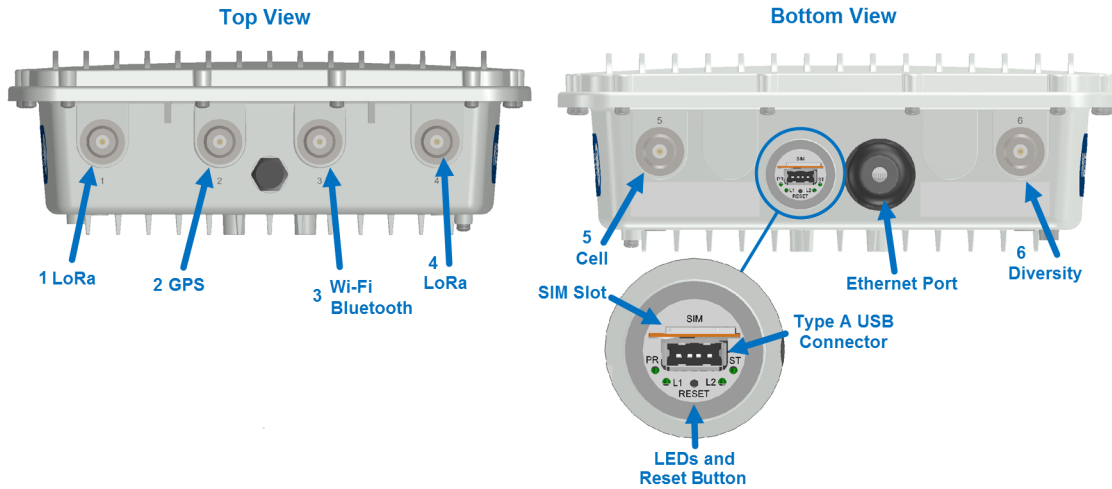
## Dimensions





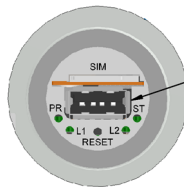
# LEDs and Connectors

## Connectors



#	Connector	Description
1	LoRa	Connector for LoRa antenna. If the model has only one LoRa card, attach the LoRa antenna to this connector.
2	GPS	Connector for GPS antenna.
3	Wi-Fi/Bluetooth	For Wi-Fi/Bluetooth models, use this connector for the Wi-Fi antenna.
4	LoRa	Connector for LoRa antenna. Used only if the model has two LoRa cards.
5	Cell	For cellular models, use this connector for an LTE antenna.
6	Diversity	For cellular models, use this connector for the second LTE antenna.
--	USB	Type A USB connector. Behind plastic cover.
--	Ethernet Port	Ethernet port with IP67 rated cable gland.

## LEDs



Label	LED	Description
PR	Power	Green when powered up.
ST	Status	A double green blink every second, a single red blink approximately every 3 seconds.

Label	LED	Description
L1	LoRa 1	User-defined. Can be red or green.
L2	LoRa 2	

## LED Programming Notes

### mPower LED Notes

For mPower models

- The default state of the L1 and L2 LEDs depends on the cellular connection (connected/disconnected) and signal strength.
- To change the LED behavior modify the script /sbin/led\_cd\_ss.

### mLinux LED Notes

For mLinux models

- The default state of the L1 and L2 LEDs is off.
- Users control L1 and L2 LEDs as follows:

#### For L1:

Turn L1 Green	mts-io-sysfs store led-cd 1
Turn L1 Red	mts-io-sysfs store led-sig1 1
Turn L1 Off	mts-io-sysfs store led-cd 0
	AND
	mts-io-sysfs store led-sig1 0

#### For L2:

Turn L2 Green	mts-io-sysfs store led-sig2 1
Turn L2 Red	mts-io-sysfs store led-sig3 1
Turn L2 Off	mts-io-sysfs store led-sig2 0
	AND
	mts-io-sysfs store led-sig3 0

## Power Draw

Radio Protocol	Cellular Call Box Connection No Data	Measured Current at Maximum Power <sup>1</sup>	TX Pulse <sup>2</sup> (AVG) Amplitude Current for GSM850 or Peak Current for HSDPA	Total Inrush Charge <sup>3</sup> Measured in MilliCoulombs	Total Inrush Charge Duration during Powerup
56.0 Volts					

Radio Protocol	Cellular Call Box Connection No Data	Measured Current at Maximum Power <sup>1</sup>	TX Pulse <sup>2</sup> (AVG) Amplitude Current for GSM850 or Peak Current for HSDPA	Total Inrush Charge <sup>3</sup> Measured in MilliCoulombs	Total Inrush Charge Duration during Powerup
LTE (WS46=31) Band 14	66 mA	181 mA	248 mA	213 mC	132 mS
WCDMA (WS46=22)	63 mA	180 mA	256 mA	213 mC	132 mS
42.0 Volts (Safety Testing Limit)					
LTE (WS46=31) Band 14	83 mA	238 mA	304 mA	230 mC	151 mS
WCDMA (WS46=22)	80 mA	238 mA	308 mA	230 mC	151 mS

**Note:**

<sup>1</sup>Maximum Power: The continuous current during maximum data rate with the radio transmitter at maximum power.

<sup>2</sup>TX Pulse: The average peak current during a GSM850 transmission burst period or HSDPA connection. The transmission burst duration for GSM850 can vary, depending on what transmission scheme is being deployed.

<sup>3</sup>Inrush Charge: The total inrush charge at power on.

## LE910 Telit Transmission Output Power

Band	Power Class
GSM 850/900 MHz	4 (2W)
DCS 1800, PCS 1900 MHz	1 (1W)
EDGE, 850/900 MHz	E2 (0.5W)
EDGE, 1800/1900 MHz	Class E2 (0.4W)
WCDMA/FDD 800/850/900, 1900/2100 MHz	Class 3 (0.25W)
LTE FDD 700/800/850/900, 1800/1900/2100/2600 MHz	Class 3 (0.2W)

## LoRa Transmission Output Power for MTAC-003

### MTAC-003E00 (868 MHz)

Max output 24.5 dBm

Power	Frequency	Bandwidth
24.5 dBm	869.525 MHz*	125 kHz
13.7 dBm	868.95 MHz	250 kHz

\***Note:** Single-channel/high-power mode

## I2C Addresses

Component	I2C Address (V2.1 Board)	I2C Address (Processor Board)	Comments
TCA9535 I/O Expander	0100000		
LM 75AIM Temp Sensor	1001001		
LPS25HB Pressure Sensor	1011100		
24C04 EEPROM		101011x	LSB is A8 memory address bit
TMP102A Temp Sensor (U2)		1001000	
TMP102A Temp Sensor (U94)		1001001	Not populated
TMP102A Temp Sensor (U95)		1001010	Not populated
TMP102A Temp Sensor (U96)		1001011	Not populated
GPS Receiver		1000010 (default)	Can be changed by software

## Chapter 3 – Antennas

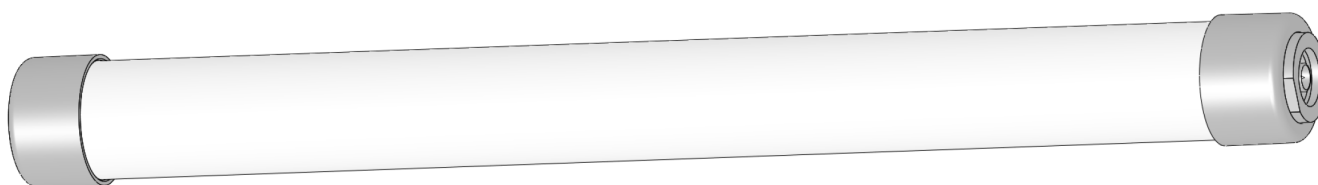
### Antenna

Depending on the model, your Base Station ships with one or more of the following antennas.

Manufacturer	Model	Description
L-Com	HGV-906U	6dBi Gain IP67 Lora Antenna
Pulse	RO8063/21704NM	3dBi Gain IP67 Lora Antenna

### Pulse Omnidirectional Antenna

Manufacturer:	Pulse
Description:	Omnidirectional antenna 806-960/1710-2170 MHz radome
Model Number:	RO8063/21704NM



### Antenna Specifications

Category	Description
Frequency Range	806-960 MHz
	1710-2170 MHz
VSWR	2.5:1 Max
Gain, Maximum	3.0 dBi $\pm$ 1 dB at 806-960 MHz
	4.0 dBi $\pm$ 1 dB at at 1710-2170 MHz
Polarization	Vertical
Impedance	50 $\Omega$
Radiation Pattern	3 dB Beamwidth
Horizontal Plane	Omni
Vertical Plane - 806-960	53° Avg
Vertical Plane – 1710-2170	39° Avg
Dimensions	15.28 inches (388.5 mm) x 1.45 inches (36.9 mm)

## GTT IP67 GPS/GLONASS Antenna

Manufacturer: GTT  
 Description: IP67 GPS/GLONASS Antenna  
 Model Number: OE-GPSGLO-016-CN



### Antenna Specifications

Category	Description
Frequency Range	1575 – 1615 MHz
Bandwidth (10 dB return loss)	43 MHz typ.
Gain at Zenith	2.4 dBic @ 1575MHz
	42.85 dBic @ 1602MHz
Polarization	RHCP
Dimensions	Diameter: 2.17 inches (55 mm)
	Length: 2.52 inches (64 mm) excluding connector

## GTT IP67 Wi-Fi Antenna

Manufacturer: GTT  
 Description: IP67 Wi-Fi Dual-Band N Type Antenna  
 Model Number: OS-ISMDB-0507-CO



## Antenna Specifications

Category	Description
Frequency Range	2.4 - 2.5 GHz
	5.15 -5.875 GHz
VSWR	2.0: 1 Max
Radiation	Omni
Gain, Maximum	4 dB at 2.4 GHz
	6 dB at 5 GHz
Polarization	Linear, vertical
Impedance	50 $\Omega$
Antenna Efficiency	60% Minimum
Dimensions	0.9 inches (22 mm) x 7.0 inches (178 mm) excluding connector

## GTT LTE N Type Antenna

Manufacturer:	GTT
Description:	LTE N Type Antenna
Model Number:	OS-LTE-11-CO



## Antenna Specifications

Category	Description
Frequency Range	690-960 MHz
	1710-2170 MHz
	2500 -2690 MHz
VSWR	3.5:1 Max
Gain, Maximum	1.1 dB at 690-960 MHz
	3.5 dB at 1710-2170 MHz
	1.9 dB at 2500 -2690 MHz
Polarization	Linear, vertical
Impedance	50 $\Omega$
HPBW- Horizontal	360°

Category	Description
HPBW - Vertical	60°
Dimensions	0.9 inches (22 mm) x 7.0 inches (178 mm) excluding connector



## Chapter 4 – Regulatory Information

### EMC, Safety, and R&TTE Directive (RED) Compliance



The CE mark is affixed to this product to confirm compliance with the following European Community Directives:

Council Directive 2011/65/EU on the restriction of the use of certain hazardous substances in electrical and electronic equipment;

and

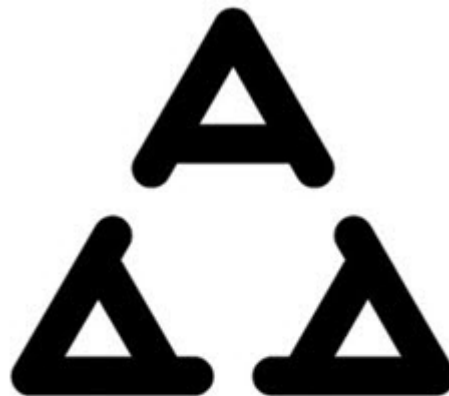
Council Directive 2014/53/EU on radio equipment and telecommunications terminal equipment and the mutual recognition of their conformity.

and

Council Directive 2014/35/EU on the harmonization of the laws of Member States relating to Electrical Equipment designed for use within certain voltage limits.

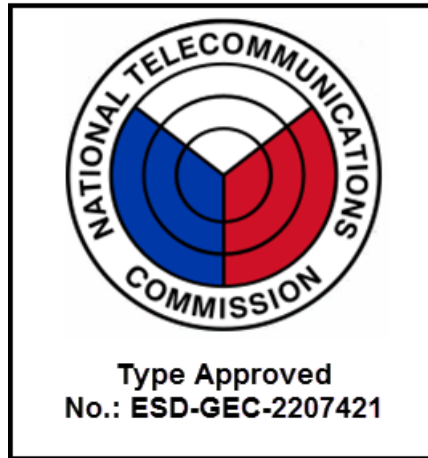
MultiTech declares that this device is in compliance with the essential requirements and other relevant provisions of Directive 2014/53/EU. The declaration of conformity may be downloaded at <https://www.multitech.com/red>

### Serbia Approval



**И 038 22**

## Philippines Approval



## Vietnam Certification



## Chapter 5 – Safety Notices

### Installation Safety

This information is also available in the Installation Guide , in the box and available at <https://www.multitech.com/brands/multiconnect-conduit-ip67> Select your model to find the correct installation guide for your device.

#### Warnings and Cautions

Warning and Caution symbols mean potential danger. You are in a situation that could cause bodily injury. Before working on any equipment, be aware of hazards in the installation area and be knowledgeable about electrical circuitry. Be familiar with standard practices for preventing accidents.

For translations of key cautions and warnings, refer Appendix A.



**Warning:** Only trained and qualified personnel should install, replace, or service this equipment. Installation must comply with local and national electrical codes. Classification of use by: Skilled person

- When installing or replacing the unit, the ground connection must always be made first and disconnected last.
- Disconnect PoE power (Ethernet PoE port) before servicing the device.
- Do not work on the system or connect or disconnect cables during periods of lightning activity.
- This device is not designed or approved to be used in any Hazardous Locations. Do not install or operate device if area is known to be an explosive environment.
- Externally ground this equipment using a customer-supplied ground wire before applying power. Contact an electrician if you are uncertain that suitable grounding is available. Refer to *Installing the Ground Wire* instructions in the Installation Guide (available at <https://www.multitech.com/brands/multiconnect-conduit-ip67>). All wall mounting installations are subject to the acceptance of local jurisdiction.
- Do not locate antenna near overhead power lines or other electric light or power circuits, or where it can come into contact with such circuits. When installing the antenna, take extreme care not to come into contact with such circuits, because they may cause serious injury or death. For proper installation and grounding of the antenna, please refer to national and local codes.



#### **Warning:**

HOT SURFACE DO NOT TOUCH

Note: This symbol is included on the serial label. UL evaluated this device to a safety and outdoor certification temperature of -30c to +70c.

**Note:** MultiTech recommends inspecting the mounting hardware every 3-6 months to ensure it has not become loose or damaged due to weather conditions (such as lightning or wind) or a corrosive environment (such as saltwater).

## Lithium Battery

- A lithium battery (3V, coin cell, CR1632) located within the product provides backup power for the timekeeping. If the device is left powered off, the battery lasts approximately 90 days.
- When this battery starts to weaken, the date and time may be incorrect.
- Battery is not user replaceable. If the battery fails, the device must be sent back to MultiTech Systems for battery replacement.
- Lithium cells and batteries are subject to the Provisions for International Transportation. Multi-Tech Systems, Inc. confirms that the Lithium batteries used in the MultiTech product(s) referenced in this manual comply with Special Provision 188 of the UN Model Regulations, Special Provision A45 of the ICAO-TI/IATA-DGR (Air), Special Provision 310 of the IMDG Code, and Special Provision 188 of the ADR and RID (Road and Rail Europe).

**CAUTION:** Risk of explosion if this battery is replaced by an incorrect type. Dispose of batteries according to instructions.

**Attention:** Risque d'explosion si vous remplacez la batterie par un modèle incompatible. Jetez les piles usagées selon les instructions.

## User Responsibility

Respect all local regulations for operating your wireless device. Use the security features to block unauthorized use and theft.

End user must operate product per country laws and rules

## Device Maintenance

Do not attempt to disassemble the device. There are no user serviceable parts inside.

When maintaining your device:

- Do not misuse the device. Follow instructions on proper operation and only use as intended. Misuse could make the device inoperable, damage the device and/or other equipment, or harm users.
- Do not apply excessive pressure or place unnecessary weight on the device. This could result in damage to the device or harm to users.
- Do not use this device in explosive or hazardous environments unless the model is specifically approved for such use. The device may cause sparks. Sparks in explosive areas could cause explosion or fire and may result in property damage, severe injury, and/or death.
- Do not expose your device to any extreme environment where the temperature or humidity is high. Such exposure could result in damage to the device or fire. Refer to the device specifications regarding recommended operating temperature and humidity.
- Using accessories, such as antennas, that MultiTech has not authorized or that are not compliant with the device's accessory specifications may invalidate the warranty.

If the device is not working properly, contact MultiTech Technical Support.

## Vehicle Safety

When using your device in a vehicle:

- Do not use this device while driving.
- Respect national regulations on the use of cellular devices in vehicles.
- If incorrectly installed in a vehicle, operating the wireless device could interfere with the vehicle's electronics. To avoid such problems, use qualified personnel to install the device. The installer should verify the vehicle electronics are protected from interference.
- Using an alert device to operate a vehicle's lights or horn is not permitted on public roads.
- UL evaluated this device for use in ordinary locations only. UL did NOT evaluate this device for installation in a vehicle or other outdoor locations. UL Certification does not apply or extend to use in vehicles or outdoor applications.

## Notice regarding Compliance with FCC, EU , and Industry Canada Requirements for RF Exposure

The antenna intended for use with this unit meets the requirements for mobile operating configurations and for fixed mounted operations, as defined in 2.1091 of the FCC rules for satisfying RF exposure compliance. This device also meets the European RF exposure requirements of EN 62311. If an alternate antenna is used, consult user documentation for required antenna specifications.

Compliance of the device with the FCC, EU, and IC rules regarding RF Exposure was established and is given with the maximum antenna gain as specified above for a minimum distance of 35 cm between the devices radiating structures (the antenna) and the body of users. Qualification for distances closer than 35 cm (portable operation) would require re-certification.

Wireless devices could generate radiation. Other nearby electronic devices, like microwave ovens, may also generate additional radiation to the user causing a higher level of RF exposure.

## Radio Frequency (RF) Safety

Due to the possibility of radio frequency (RF) interference, it is important that you follow any special regulations regarding the use of radio equipment. Follow the safety advice given below.

- Operating your device close to other electronic equipment may cause interference if the equipment is inadequately protected. Observe any warning signs and manufacturers' recommendations.
- Different industries and businesses restrict the use of cellular devices. Respect restrictions on the use of radio equipment in fuel depots, chemical plants, or where blasting operations are in process. Follow restrictions for any environment where you operate the device.
- Do not place the antenna outdoors.
- Switch OFF your wireless device when in an aircraft. Using portable electronic devices in an aircraft may endanger aircraft operation, disrupt the cellular network, and is illegal. Failing to observe this restriction may lead to suspension or denial of cellular services to the offender, legal action, or both.
- Switch OFF your wireless device when around gasoline or diesel-fuel pumps and before filling your vehicle with fuel.
- Switch OFF your wireless device in hospitals and any other place where medical equipment may be in use.

## Sécurité relative aux appareils à radiofréquence (RF)

À cause du risque d'interférences de radiofréquence (RF), il est important de respecter toutes les réglementations spéciales relatives aux équipements radio. Suivez les conseils de sécurité ci-dessous.

- Utiliser l'appareil à proximité d'autres équipements électroniques peut causer des interférences si les équipements ne sont pas bien protégés. Respectez tous les panneaux d'avertissement et les recommandations du fabricant.
- Certains secteurs industriels et certaines entreprises limitent l'utilisation des appareils cellulaires. Respectez ces restrictions relatives aux équipements radio dans les dépôts de carburant, dans les usines de produits chimiques, ou dans les zones où des dynamitages sont en cours. Suivez les restrictions relatives à chaque type d'environnement où vous utiliserez l'appareil.
- Ne placez pas l'antenne en extérieur.
- Éteignez votre appareil sans fil dans les avions. L'utilisation d'appareils électroniques portables en avion est illégale: elle peut fortement perturber le fonctionnement de l'appareil et désactiver le réseau cellulaires. S'il ne respecte pas cette consigne, le responsable peut voir son accès aux services cellulaires suspendu ou interdit, peut être poursuivi en justice, ou les deux.
- Éteignez votre appareil sans fil à proximité des pompes à essence ou de diesel avant de remplir le réservoir de votre véhicule de carburant.
- Éteignez votre appareil sans fil dans les hôpitaux ou dans toutes les zones où des appareils médicaux sont susceptibles d'être utilisés.

## Interference with Pacemakers and Other Medical Devices

### Potential interference

Radio frequency energy (RF) from cellular devices can interact with some electronic devices. This is electromagnetic interference (EMI). The FDA helped develop a detailed test method to measure EMI of implanted cardiac pacemakers and defibrillators from cellular devices. This test method is part of the Association for the Advancement of Medical Instrumentation (AAMI) standard. This standard allows manufacturers to ensure that cardiac pacemakers and defibrillators are safe from cellular device EMI.

### Precautions for pacemaker wearers

If EMI occurs, it could affect a pacemaker in one of three ways:

- Stop the pacemaker from delivering the stimulating pulses that regulate the heart's rhythm.
- Cause the pacemaker to deliver the pulses irregularly.
- Cause the pacemaker to ignore the heart's own rhythm and deliver pulses at a fixed rate.

Based on current research, cellular devices do not pose a significant health problem for most pacemaker wearers. However, people with pacemakers may want to take simple precautions to be sure that their device doesn't cause a problem.

- Keep the device on the opposite side of the body from the pacemaker to add extra distance between the pacemaker and the device.
- Avoid placing a turned-on device next to the pacemaker (for example, don't carry the device in a shirt or jacket pocket directly over the pacemaker).

## Chapter 6 – Environmental Notices

### Waste Electrical and Electronic Equipment Statement

**Note:** This statement may be used in documentation for your final product applications.

#### WEEE Directive

The WEEE Directive places an obligation on EU-based manufacturers, distributors, retailers, and importers to take-back electronics products at the end of their useful life. A sister directive, ROHS (Restriction of Hazardous Substances) complements the WEEE Directive by banning the presence of specific hazardous substances in the products at the design phase. The WEEE Directive covers all MultiTech products imported into the EU as of August 13, 2005. EU-based manufacturers, distributors, retailers and importers are obliged to finance the costs of recovery from municipal collection points, reuse, and recycling of specified percentages per the WEEE requirements.

#### Instructions for Disposal of WEEE by Users in the European Union

The symbol shown below is on the product or on its packaging, which indicates that this product must not be disposed of with other waste. Instead, it is the user's responsibility to dispose of their waste equipment by handing it over to a designated collection point for the recycling of waste electrical and electronic equipment. The separate collection and recycling of your waste equipment at the time of disposal will help to conserve natural resources and ensure that it is recycled in a manner that protects human health and the environment. For more information about where you can drop off your waste equipment for recycling, please contact your local city office, your household waste disposal service or where you purchased the product.

July, 2005



## Restriction of the Use of Hazardous Substances (RoHS)

**Multi-Tech Systems, Inc.**

**Certificate of Compliance**

**2015/863**

Multi-Tech Systems, Inc. confirms that its embedded products comply with the chemical concentration limitations set forth in the directive 2015/863 of the European Parliament (Restriction of the use of certain Hazardous Substances in electrical and electronic equipment - RoHS 3).

These MultiTech products do not contain the following banned chemicals<sup>1</sup>:

- Lead, [Pb] < 1000 PPM
- Mercury, [Hg] < 100 PPM
- Cadmium, [Cd] < 100 PPM
- Hexavalent Chromium, [Cr+6] < 1000 PPM
- Polybrominated Biphenyl, [PBB] < 1000 PPM
- Polybrominated Diphenyl Ethers, [PBDE] < 1000 PPM
- Bis(2-Ethylhexyl) phthalate (DEHP): < 1000 ppm
- Benzyl butyl phthalate (BBP): < 1000 ppm
- Dibutyl phthalate (DBP): < 1000 ppm
- Diisobutyl phthalate (DIBP): < 1000 ppm

## REACH-SVHC Statement

### Registration of Substances

**Multi-Tech Systems, Inc.** confirms that none of its products or packaging contain any of the Substances of Very High Concern (SVHC) on the REACH Candidate List, in a concentration above the 0.1% by weight allowable limit.

For the current REACH-SVHC statement, refer to additional regulatory documents at:

<https://www.multitech.com/support/support>



## Information on HS/TS Substances According to Chinese Standards (in Chinese)

### 依照中国标准的有毒有害物质信息

根据中华人民共和国信息产业部 (MII) 制定的电子信息产品 (EIP) 标准—中华人民共和国《电子信息产品污染控制管理办法》(第 39 号), 也称作中国 RoHS, 下表列出了 Multi-Tech Systems, Inc. 产品中可能含有的有毒物质 (TS) 或有害物质 (HS) 的名称及含量水平方面的信息。

### 有害/有毒物质/元素

成分名称	铅 (PB)	汞 (Hg)	镉 (CD)	六价铬 (CR6+)	多溴联苯 (PBB)	多溴二苯醚 (PBDE)
印刷电路板	O	O	O	O	O	O
电阻器	X	O	O	O	O	O
电容器	X	O	O	O	O	O
铁氧体磁环	O	O	O	O	O	O
继电器/光学部件	O	O	O	O	O	O
ICs	O	O	O	O	O	O
二极管/晶体管	O	O	O	O	O	O
振荡器和晶振	X	O	O	O	O	O
调节器	O	O	O	O	O	O
电压传感器	O	O	O	O	O	O
变压器	O	O	O	O	O	O
扬声器	O	O	O	O	O	O
连接器	O	O	O	O	O	O
LEDs	O	O	O	O	O	O
螺丝、螺母以及其它五金件	X	O	O	O	O	O
交流-直流电源	O	O	O	O	O	O
软件/文档 CD	O	O	O	O	O	O
手册和纸页	O	O	O	O	O	O
底盘	O	O	O	O	O	O

X 表示所有使用类似材料的设备中有害/有毒物质的含量水平高于 SJ/Txxx-2006 限量要求。

O 表示不含该物质或者该物质的含量水平在上述限量要求之内。

## Information on HS/TS Substances According to Chinese Standards

In accordance with China's Administrative Measures on the Control of Pollution Caused by Electronic Information Products (EIP) # 39, also known as China RoHS, the following information is provided regarding the names and concentration levels of Toxic Substances (TS) or Hazardous Substances (HS) which may be contained in Multi-Tech Systems Inc. products relative to the EIP standards set by China's Ministry of Information Industry (MII).

### Hazardous/Toxic Substance/Elements

Name of the Component	Lead (PB)	Mercury (Hg)	Cadmium (CD)	Hexavalent Chromium (CR6+)	Polybrominated Biphenyl (PBB)	Polybrominated Diphenyl Ether (PBDE)
Printed Circuit Boards	O	O	O	O	O	O
Resistors	X	O	O	O	O	O
Capacitors	X	O	O	O	O	O
Ferrite Beads	O	O	O	O	O	O
Relays/Opticals	O	O	O	O	O	O
ICs	O	O	O	O	O	O
Diodes/ Transistors	O	O	O	O	O	O
Oscillators and Crystals	X	O	O	O	O	O
Regulator	O	O	O	O	O	O
Voltage Sensor	O	O	O	O	O	O
Transformer	O	O	O	O	O	O
Speaker	O	O	O	O	O	O
Connectors	O	O	O	O	O	O
LEDs	O	O	O	O	O	O
Screws, Nuts, and other Hardware	X	O	O	O	O	O
AC-DC Power Supplies	O	O	O	O	O	O
Software /Documentation CDs	O	O	O	O	O	O
Booklets and Paperwork	O	O	O	O	O	O
Chassis	O	O	O	O	O	O

**X** Represents that the concentration of such hazardous/toxic substance in all the units of homogeneous material of such component is higher than the SJ/Txxx-2006 Requirements for Concentration Limits.

**O** Represents that no such substances are used or that the concentration is within the aforementioned limits.