

UKCA Declaration of Conformity



Product names:

MTCDT3AC-L4G1-A31EHE-EEM, MTCDT3AC-L4G1-A31EHE-EWM, MTCDT3AC-EN-A31EGE-EEM,
MTCDT3AC-EN-A300HE-EWM, MTCDT3AC-EN-A300GE-EWM, MTCDT3AC-L4G1-A300HE-EWM,
MTCDT3AC-L4G1-A300GE-EWM

Name and Address of Manufacturer:

Multi-Tech Systems, Inc.
2205 Woodale Drive
Mounds View, Minnesota 55112 USA

This declaration of conformity is issued under the sole responsibility of the manufacturer.

Object of Declaration: The MTCDT3AC family of products are 4G LTE and Ethernet IoT Gateways.

The object of the declaration described above is in conformity with the relevant regulation: Radio Equipment Regulations 2017

The conformity with the essential requirements set out in Regulations 6 of the Radio Equipment Regulations 2017 has been demonstrated against the following standards:

2017 No 1206	The Radio Equipment Regulations 2017
2016 No 1101	The Electrical Equipment Safety Regulations 2016
2016 No 1091	The Electromagnetic Compatibility Regulations 2016
2012 No 3032	The Restriction of the Use of Hazardous Substances in Electrical and Electronic Equipment Regulations 2012

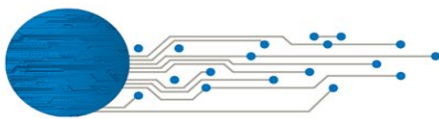
Place: Mounds View, MN USA

Date: November 11, 2022

Signature:  _____

Full Name: Tim Gunn

Position: Director of Certifications



Regulations of Radio Equipment Regulations 2017		
Designated and Not Designated Standard reference		
Description	Health and Safety of the User	
Safety	IEC 62368-1:2014 (2 nd Edition) EN 62368-1:2014 + A11:2017	
MPE /RF Exposure	EN 62311:2008 EN 62311:2020	
ROHS	EN IEC 63000:2018	
Electromagnetic Compatibility and Effective use of spectrum allocated		
Cellular and GNSS	Electromagnetic Compatibility	Effective use of spectrum allocated
	EN 301 489-1 V2.2.3 (General) EN 301 489-7 V1.3.1 (GSM)* EN 301 489-19 V2.1.1 (GNSS receivers) EN 301 489-52 V1.1.0 (Cellular)* *Cellular versions only	EN 303 413 V1.1.1 (GNSS) EN 301 511 V12.5.1 (GSM)* EN 301 908-1 V13.1.1 (UMTS/LTE)* EN 301 908-2 V13.1.1 (IMT Cellular)* EN 301 908-13 V13.1.1 (IMT Cellular E-UTRA)* *Cellular versions only
-LORA From MTAC-LORA- H-868	EN 301 489-1 V2.2.3 (General) EN 301 489-3 V2.1.1 (LoRa/SRD)	EN 300 220-2 V3.1.1 and V3.2.1(Lora/ISM)
Wifi	EN 301 489-17 V3.2.4 (BT/Wifi)	EN 300 328 V2.2.2 (2.4 GHz ISM) EN 301 893 V2.1.1 (5 GHz RLAN)