



## EU Declaration of Conformity



**Product names:**

MTCAP3-EN-A23EEA-DEM / MTCAP3-EN-A23EEA-LEM/ MTCAP3-LEU7-A23EEA-DEM / MTCAP3-LEU7-A23EEA-LEM

**Name and Address of Manufacturer:**

Multi-Tech Systems, Inc.  
2205 Woodale Drive  
Mounds View, Minnesota 55112 USA

**This declaration of conformity is issued under the sole responsibility of the manufacturer.**

**Object of Declaration:** The MTCAP3 family of products are 4G LTE and Ethernet IoT Gateways.

**The object of the declaration as described above is in conformity with the relevant European Union harmonized legislation:** Directive 2014/53/EU, Directive 2014/35/EU, Directive 2015/863

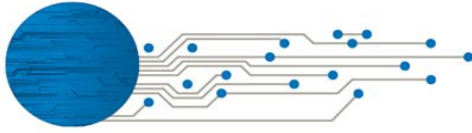
**Place:** Mounds View, MN USA

**Date:** February 7, 2023

**Signature:**

**Full Name:** Tim Gunn

**Position:** Director of Certifications



Directive	Description	Applicable Standards (CE)	
2014/35/EU Art. 3.1a	Safety	IEC 62368-1:2014 (2 <sup>nd</sup> Edition) EN 62368-1:2014 + A11:2017	
	MPE /RF Exposure	EN 62311:2008 EN 62311:2020	
2015/863	ROHS	EN IEC 63000:2018	
2014/53/EU	RED Cellular	Art 3.1b EN 301 489-1 V2.2.3 (General) EN 301 489-7 V1.3.1 (GSM)* EN 301 489-52 V1.2.1 (Cellular)* *Cellular versions only	Art. 3.2 EN 301 511 V12.5.1 (GSM)* EN 301 908-1 V15.1.1 (UMTS/LTE)* EN 301 908-2 V13.1.1 (IMT Cellular)* EN 301 908-13 V13.1.1 (IMT Cellular E-UTRA)* *Cellular versions only
	Emissions and Immunity	EN 55032:2015/A11:2020 EN 55035:2017/A11:2020 EN 61000-3-2:2014 EN61000-3-3:2013	
	RED-LORA	EN 301 489-1 V2.2.3 (General) EN 301 489-3 V2.1.1 (LoRa/SRD)	EN 300 220-2 V3.1.1 (Lora/ISM) EN 300 220-2 V3.2.1 (Lora/ISM)